



# Lck BP-1 (phospho Tyr397) rabbit pAb

Cat No.:ES5723

For research use only

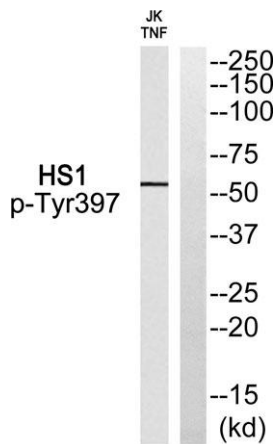
## Overview

<b>Product Name</b>	Lck BP-1 (phospho Tyr397) rabbit pAb
<b>Host species</b>	Rabbit
<b>Applications</b>	WB;IHC
<b>Species Cross-Reactivity</b>	Human;Rat;Mouse;
<b>Recommended dilutions</b>	WB 1:500-2000;IHC-p 1:50-300
<b>Immunogen</b>	The antiserum was produced against synthesized peptide derived from human HS1 around the phosphorylation site of Tyr397. AA range:366-415
<b>Specificity</b>	Phospho-Lck BP-1 (Y397) Polyclonal Antibody detects endogenous levels of Lck BP-1 protein only when phosphorylated at Y397.
<b>Formulation</b>	Liquid in PBS containing 50% glycerol, 0.5% BSA and 0.02% sodium azide.
<b>Storage</b>	Store at -20°C. Avoid repeated freeze-thaw cycles.
<b>Protein Name</b>	Hematopoietic lineage cell-specific protein
<b>Gene Name</b>	HCLS1
<b>Cellular localization</b>	Membrane ; Peripheral membrane protein . Cytoplasm . Mitochondrion .
<b>Purification</b>	The antibody was affinity-purified from rabbit antiserum by affinity-chromatography using epitope-specific immunogen.
<b>Clonality</b>	Polyclonal
<b>Concentration</b>	1 mg/ml
<b>Observed band</b>	55kD
<b>Human Gene ID</b>	3059
<b>Human Swiss-Prot Number</b>	P14317
<b>Alternative Names</b>	HCLS1; HS1; Hematopoietic lineage cell-specific protein; Hematopoietic cell-specific LYN substrate 1; LckBP1; p75
<b>Background</b>	developmental stage:Expressed in early stage of myeloid and erythroid differentiation.,function:Substrate of the antigen receptor-coupled tyrosine kinase. Plays a role in

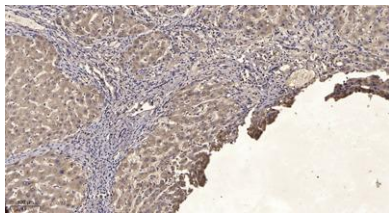




antigen receptor signaling for both clonal expansion and deletion in lymphoid cells. May also be involved in the regulation of gene expression.,PTM:Phosphorylated by LYN; rapidly after cross-linking of surface IgM on B-cells.,similarity:Contains 1 SH3 domain.,similarity:Contains 4 cortactin repeats.,subunit:Associates with the SH2 and SH3 domains of LCK. Binding to the LCK SH3 domain occurs constitutively, while binding to the LCK SH2 domain occurs only upon TCR stimulation. A similar binding pattern was observed with LYN, but not with FYN in which the FYN SH2 region associates upon TCR stimulation but the FYN SH3 region does not associate regardless of TCR stimulation. Directly associates with HAX1, through binding to its C-terminal region. Interacts with HS1BP3.,tissue specificity:Expressed only in tissues and cells of hematopoietic origin.,



Western blot analysis of HS1 (Phospho-Tyr397) Antibody. The lane on the right is blocked with the HS1 (Phospho-Tyr397) peptide.



Immunohistochemical analysis of paraffin-embedded human liver cancer. 1, Antibody was diluted at 1:200(4° overnight). 2, Tris-EDTA,pH9.0 was used for antigen retrieval. 3,Secondary antibody was diluted at 1:200(room temperature, 45min).

