



# Neurexophilin-1 rabbit pAb

Cat No.:ES5710

For research use only

## Overview

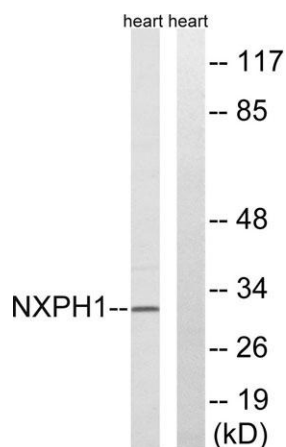
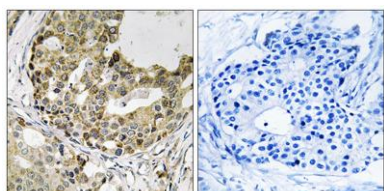
<b>Product Name</b>	Neurexophilin-1 rabbit pAb
<b>Host species</b>	Rabbit
<b>Applications</b>	WB;IHC;IF;ELISA
<b>Species Cross-Reactivity</b>	Human;Mouse;Rat
<b>Recommended dilutions</b>	Western Blot: 1/500 - 1/2000. Immunohistochemistry: 1/100 - 1/300. ELISA: 1/20000. Not yet tested in other applications.
<b>Immunogen</b>	The antiserum was produced against synthesized peptide derived from human NXPH1. AA range:77-126
<b>Specificity</b>	Neurexophilin-1 Polyclonal Antibody detects endogenous levels of Neurexophilin-1 protein.
<b>Formulation</b>	Liquid in PBS containing 50% glycerol, 0.5% BSA and 0.02% sodium azide.
<b>Storage</b>	Store at -20°C. Avoid repeated freeze-thaw cycles.
<b>Protein Name</b>	Neurexophilin-1
<b>Gene Name</b>	NXPH1
<b>Cellular localization</b>	Secreted .
<b>Purification</b>	The antibody was affinity-purified from rabbit antiserum by affinity-chromatography using epitope-specific immunogen.
<b>Clonality</b>	Polyclonal
<b>Concentration</b>	1 mg/ml
<b>Observed band</b>	31kD
<b>Human Gene ID</b>	30010
<b>Human Swiss-Prot Number</b>	P58417
<b>Alternative Names</b>	NXPH1; NPH1; Nbla00697; Neurexophilin-1
<b>Background</b>	This gene is a member of the neurexophilin family and encodes a secreted protein with a variable N-terminal domain, a highly conserved, N-glycosylated central domain, a short linker region, and a cysteine-rich C-terminal domain. This protein forms a very tight complex with alpha neurexins, a





group of proteins that promote adhesion between dendrites and axons. [provided by RefSeq, Jul 2008],

Immunohistochemistry analysis of paraffin-embedded human breast carcinoma tissue, using NXPH1 Antibody. The picture on the right is blocked with the synthesized peptide.



Western blot analysis of lysates from rat heart cells, using NXPH1 Antibody. The lane on the right is blocked with the synthesized peptide.

