



# ZIP2 rabbit pAb

Cat No.:ES5705

For research use only

## Overview

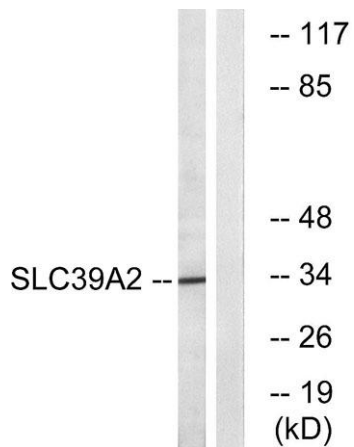
<b>Product Name</b>	ZIP2 rabbit pAb
<b>Host species</b>	Rabbit
<b>Applications</b>	WB;ELISA
<b>Species Cross-Reactivity</b>	Human;Rat;Mouse;
<b>Recommended dilutions</b>	Western Blot: 1/500 - 1/2000. ELISA: 1/10000. Not yet tested in other applications.
<b>Immunogen</b>	The antiserum was produced against synthesized peptide derived from human SLC39A2. AA range:11-60
<b>Specificity</b>	ZIP2 Polyclonal Antibody detects endogenous levels of ZIP2 protein.
<b>Formulation</b>	Liquid in PBS containing 50% glycerol, 0.5% BSA and 0.02% sodium azide.
<b>Storage</b>	Store at -20°C. Avoid repeated freeze-thaw cycles.
<b>Protein Name</b>	Zinc transporter ZIP2
<b>Gene Name</b>	SLC39A2
<b>Cellular localization</b>	Cell membrane; Multi-pass membrane protein.
<b>Purification</b>	The antibody was affinity-purified from rabbit antiserum by affinity-chromatography using epitope-specific immunogen.
<b>Clonality</b>	Polyclonal
<b>Concentration</b>	1 mg/ml
<b>Observed band</b>	36kD
<b>Human Gene ID</b>	29986
<b>Human Swiss-Prot Number</b>	Q9NP94
<b>Alternative Names</b>	SLC39A2; ZIP2; Zinc transporter ZIP2; 6A1; Eti-1; Solute carrier family 39 member 2; Zrt- and Irt-like protein 2; ZIP-2; hZIP2
<b>Background</b>	This gene encodes a member of the ZIP family of metal ion transporters. The encoded protein functions as a zinc transporter. Mutations in this gene may be associated with susceptibility to carotid artery disease. Multiple transcript variants





**ELK Biotechnology**

have been described. [provided by RefSeq, Mar 2010],



Western blot analysis of lysates from Jurkat cells, using SLC39A2 Antibody. The lane on the right is blocked with the synthesized peptide.



+86-27-59760950

[ELKbio@ELKbiotech.com](mailto:ELKbio@ELKbiotech.com)

[www.elkbiotech.com](http://www.elkbiotech.com)

23-2, No.388 Gaoxin 2nd Road, Wuhan East Lake Hi-tech Development Zone, Hubei, P.R.C