



GRO γ rabbit pAb

Cat No.:ES5682

For research use only

Overview

Product Name	GRO γ rabbit pAb
Host species	Rabbit
Applications	IHC;IF;ELISA
Species Cross-Reactivity	Human;Rat;Mouse;
Recommended dilutions	Immunohistochemistry: 1/100 - 1/300. ELISA: 1/10000. Not yet tested in other applications.
Immunogen	The antiserum was produced against synthesized peptide derived from human GRO γ . AA range:58-107
Specificity	GRO γ Polyclonal Antibody detects endogenous levels of GRO γ protein.
Formulation	Liquid in PBS containing 50% glycerol, 0.5% BSA and 0.02% sodium azide.
Storage	Store at -20°C. Avoid repeated freeze-thaw cycles.
Protein Name	C-X-C motif chemokine 3
Gene Name	CXCL3
Cellular localization	Secreted.
Purification	The antibody was affinity-purified from rabbit antiserum by affinity-chromatography using epitope-specific immunogen.
Clonality	Polyclonal
Concentration	1 mg/ml
Observed band	
Human Gene ID	2921
Human Swiss-Prot Number	P19876
Alternative Names	CXCL3; GRO3; GROG; SCYB3; C-X-C motif chemokine 3; GRO-gamma(1-73); Growth-regulated protein gamma; GRO-gamma; Macrophage inflammatory protein 2-beta; MIP2-beta
Background	This antimicrobial gene encodes a member of the CXC subfamily of chemokines. The encoded protein is a secreted growth factor that signals through the G-protein coupled receptor, CXC receptor 2. This

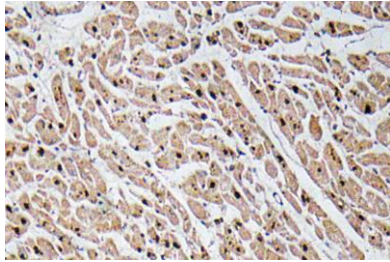




ELK Biotechnology

protein plays a role in inflammation and as a chemoattractant for neutrophils. [provided by RefSeq, Sep 2014],

Immunohistochemistry analysis of GRO α antibody in paraffin-embedded human heart tissue.



+86-27-59760950

ELKbio@ELKbiotech.com

www.elkbiotech.com

23-2, No.388 Gaoxin 2nd Road, Wuhan East Lake Hi-tech Development Zone, Hubei, P.R.C