



Cdc50C rabbit pAb

Cat No.:ES5629

For research use only

Overview

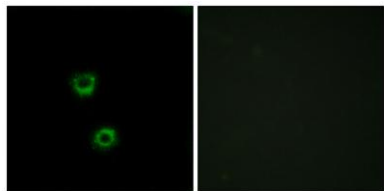
Product Name	Cdc50C rabbit pAb
Host species	Rabbit
Applications	IF;ELISA
Species Cross-Reactivity	Human;Rat;Mouse;
Recommended dilutions	Immunofluorescence: 1/200 - 1/1000. ELISA: 1/20000. Not yet tested in other applications.
Immunogen	The antiserum was produced against synthesized peptide derived from human TMEM30C. AA range:51-100
Specificity	Cdc50C Polyclonal Antibody detects endogenous levels of Cdc50C protein.
Formulation	Liquid in PBS containing 50% glycerol, 0.5% BSA and 0.02% sodium azide.
Storage	Store at -20°C. Avoid repeated freeze-thaw cycles.
Protein Name	Cell cycle control protein 50C
Gene Name	TMEM30C
Cellular localization	Membrane ; Single-pass membrane protein .
Purification	The antibody was affinity-purified from rabbit antiserum by affinity-chromatography using epitope-specific immunogen.
Clonality	Polyclonal
Concentration	1 mg/ml
Observed band	
Human Gene ID	288175
Human Swiss-Prot Number	A0ZSE6
Alternative Names	TMEM30C; CDC50C; Cell cycle control protein 50C; Transmembrane protein 30C
Background	TMEM30C, also named as CDC50C, belongs to the CDC50/LEM3 family. TMEM30C is specifically expressed in testis.





ELK Biotechnology

Immunofluorescence analysis of MCF7 cells, using TMEM30C Antibody. The picture on the right is blocked with the synthesized peptide.



+86-27-59760950

ELKbio@ELKbiotech.com

www.elkbiotech.com

23-2, No.388 Gaoxin 2nd Road,Wuhan East Lake Hi-tech Development Zone, Hubei , P.R.C