



Ribosomal Protein L7L1 rabbit pAb

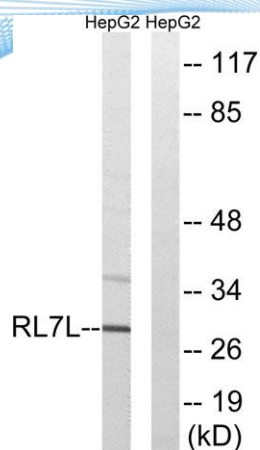
Cat No.:ES5613

For research use only

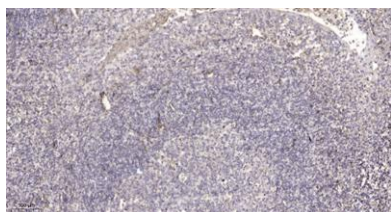
Overview

| | |
|---------------------------------|--|
| Product Name | Ribosomal Protein L7L1 rabbit pAb |
| Host species | Rabbit |
| Applications | WB;IHC;IF;ELISA |
| Species Cross-Reactivity | Human;Rat;Mouse; |
| Recommended dilutions | Western Blot: 1/500 - 1/2000. Immunohistochemistry: 1/100 - 1/300. ELISA: 1/40000. Not yet tested in other applications. |
| Immunogen | The antiserum was produced against synthesized peptide derived from human RPL7L1. AA range:41-90 |
| Specificity | Ribosomal Protein L7L1 Polyclonal Antibody detects endogenous levels of Ribosomal Protein L7L1 protein. |
| Formulation | Liquid in PBS containing 50% glycerol, 0.5% BSA and 0.02% sodium azide. |
| Storage | Store at -20°C. Avoid repeated freeze-thaw cycles. |
| Protein Name | 60S ribosomal protein L7-like 1 |
| Gene Name | RPL7L1 |
| Cellular localization | nucleolus,ribosome,cytosolic large ribosomal subunit, |
| Purification | The antibody was affinity-purified from rabbit antiserum by affinity-chromatography using epitope-specific immunogen. |
| Clonality | Polyclonal |
| Concentration | 1 mg/ml |
| Observed band | 29kD |
| Human Gene ID | 285855 |
| Human Swiss-Prot Number | Q6DK11 |
| Alternative Names | RPL7L1; 60S ribosomal protein L7-like 1 |
| Background | similarity:Belongs to the ribosomal protein L30P family., |





Western blot analysis of lysates from HepG2 cells, using RPL7L1 Antibody. The lane on the right is blocked with the synthesized peptide.



Immunohistochemical analysis of paraffin-embedded human tonsil. 1, Antibody was diluted at 1:200(4° overnight). 2, Tris-EDTA,pH9.0 was used for antigen retrieval. 3,Secondary antibody was diluted at 1:200(room temperature, 45min).

