



GPR31 rabbit pAb

Cat No.:ES5606

For research use only

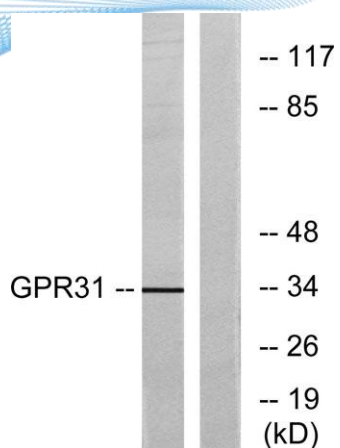
Overview

Product Name	GPR31 rabbit pAb
Host species	Rabbit
Applications	WB;ELISA
Species Cross-Reactivity	Human;Rat;Mouse;
Recommended dilutions	Western Blot: 1/500 - 1/2000. ELISA: 1/5000. Not yet tested in other applications.
Immunogen	The antiserum was produced against synthesized peptide derived from human GPR31. AA range:181-230
Specificity	GPR31 Polyclonal Antibody detects endogenous levels of GPR31 protein.
Formulation	Liquid in PBS containing 50% glycerol, 0.5% BSA and 0.02% sodium azide.
Storage	Store at -20°C. Avoid repeated freeze-thaw cycles.
Protein Name	12-(S)-hydroxy-5,8,10,14-eicosatetraenoic acid receptor
Gene Name	GPR31
Cellular localization	Cell membrane ; Multi-pass membrane protein .
Purification	The antibody was affinity-purified from rabbit antiserum by affinity-chromatography using epitope-specific immunogen.
Clonality	Polyclonal
Concentration	1 mg/ml
Observed band	33kD
Human Gene ID	2853
Human Swiss-Prot Number	O00270
Alternative Names	GPR31; 12-(S)-hydroxy-5; 8,10,14-eicosatetraenoic acid receptor; 12-(S)-HETE receptor; 12-HETER; G-protein coupled receptor 31
Background	function:Orphan receptor.,similarity:Belongs to the G-protein coupled receptor 1 family.,





ELK Biotechnology



Western blot analysis of lysates from COLO cells, using GPR31 Antibody. The lane on the right is blocked with the synthesized peptide.



+86-27-59760950

ELKbio@ELKbiotech.com

www.elkbiotech.com

23-2, No.388 Gaoxin 2nd Road,Wuhan East Lake Hi-tech Development Zone, Hubei , P.R.C