



GPR25 rabbit pAb

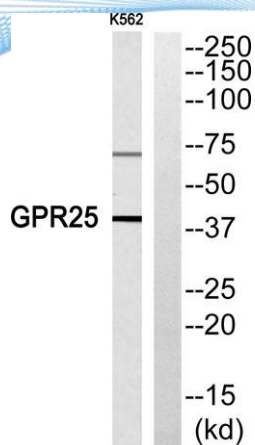
Cat No.:ES5602

For research use only

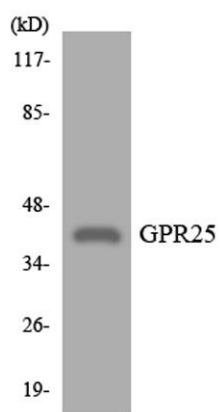
Overview

Product Name	GPR25 rabbit pAb
Host species	Rabbit
Applications	WB;ELISA
Species Cross-Reactivity	Human;Rat;Mouse;
Recommended dilutions	Western Blot: 1/500 - 1/2000. ELISA: 1/5000. Not yet tested in other applications.
Immunogen	The antiserum was produced against synthesized peptide derived from human GPR25. AA range:193-242
Specificity	GPR25 Polyclonal Antibody detects endogenous levels of GPR25 protein.
Formulation	Liquid in PBS containing 50% glycerol, 0.5% BSA and 0.02% sodium azide.
Storage	Store at -20°C. Avoid repeated freeze-thaw cycles.
Protein Name	Probable G-protein coupled receptor 25
Gene Name	GPR25
Cellular localization	Cell membrane; Multi-pass membrane protein.
Purification	The antibody was affinity-purified from rabbit antiserum by affinity-chromatography using epitope-specific immunogen.
Clonality	Polyclonal
Concentration	1 mg/ml
Observed band	38kD
Human Gene ID	2848
Human Swiss-Prot Number	O00155
Alternative Names	GPR25; Probable G-protein coupled receptor 25
Background	This gene is intronless and encodes a member of the G-protein coupled receptor 1 family. G-protein coupled receptors are membrane proteins which activate signaling cascades as a response to extracellular stress. This gene has been linked to arterial stiffness. [provided by RefSeq, Nov 2012],





Western blot analysis of GPR25 Antibody. The lane on the right is blocked with the GPR25 peptide.



Western blot analysis of the lysates from K562 cells using GPR25 antibody.

