



GPR18 rabbit pAb

Cat No.:ES5593

For research use only

Overview

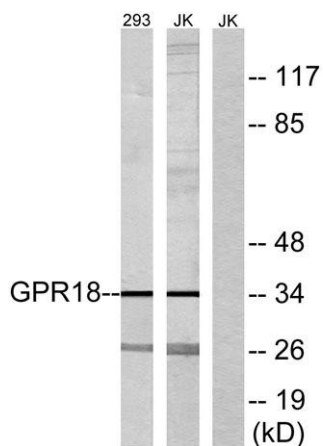
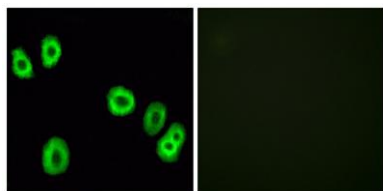
Product Name	GPR18 rabbit pAb
Host species	Rabbit
Applications	WB;IHC;IF;ELISA
Species Cross-Reactivity	Human;Mouse;Rat
Recommended dilutions	Western Blot: 1/500 - 1/2000. Immunohistochemistry: 1/100 - 1/300. Immunofluorescence: 1/200 - 1/1000. ELISA: 1/5000. Not yet tested in other applications.
Immunogen	The antiserum was produced against synthesized peptide derived from human GPR18. AA range:191-240
Specificity	GPR18 Polyclonal Antibody detects endogenous levels of GPR18 protein.
Formulation	Liquid in PBS containing 50% glycerol, 0.5% BSA and 0.02% sodium azide.
Storage	Store at -20°C. Avoid repeated freeze-thaw cycles.
Protein Name	N-arachidonyl glycine receptor
Gene Name	GPR18
Cellular localization	Cell membrane ; Multi-pass membrane protein . Cytoplasmic vesicle membrane .
Purification	The antibody was affinity-purified from rabbit antiserum by affinity-chromatography using epitope-specific immunogen.
Clonality	Polyclonal
Concentration	1 mg/ml
Observed band	34kD
Human Gene ID	2841
Human Swiss-Prot Number	Q14330
Alternative Names	GPR18; GPCRW; N-arachidonyl glycine receptor; NAGly receptor; G-protein coupled receptor 18
Background	function:Receptor for N-arachidonyl glycine. The activity of this receptor is mediated by G proteins which inhibit adenylyl cyclase. May contribute to



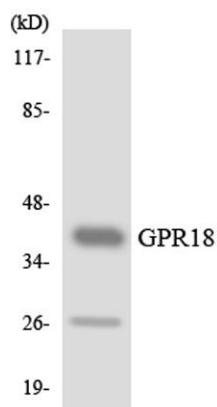


regulation of the immune system.,similarity:Belongs to the G-protein coupled receptor 1 family.,tissue specificity:Most abundant in testis and spleen. Highly expressed in CD4 and CD8-positive T-cells as well as CD19-positive B-cells.,

Immunofluorescence analysis of HUVEC cells, using GPR18 Antibody. The picture on the right is blocked with the synthesized peptide.



Western blot analysis of lysates from 293 and Jurkat cells, using GPR18 Antibody. The lane on the right is blocked with the synthesized peptide.

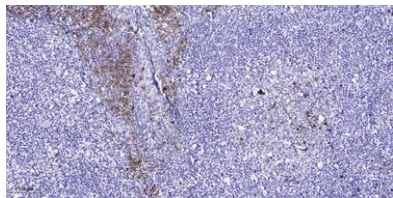


Western blot analysis of the lysates from HUVECcells using GPR18 antibody.





ELK Biotechnology



Immunohistochemical analysis of paraffin-embedded human tonsil. 1, Antibody was diluted at 1:200(4° overnight). 2, Tris-EDTA,pH9.0 was used for antigen retrieval. 3,Secondary antibody was diluted at 1:200(room temperature, 45min).



+86-27-59760950

ELKbio@ELKbiotech.com

www.elkbiotech.com

23-2, No.388 Gaoxin 2nd Road,Wuhan East Lake Hi-tech Development Zone, Hubei , P.R.C