



Olfactory receptor 4N4 rabbit pAb

Cat No.:ES5587

For research use only

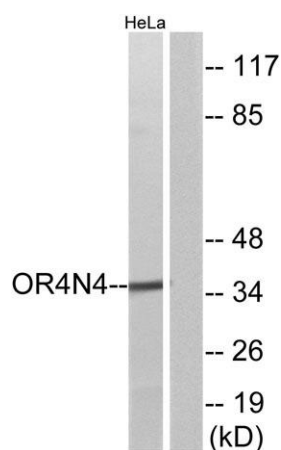
Overview

Product Name	Olfactory receptor 4N4 rabbit pAb
Host species	Rabbit
Applications	WB;IF;ELISA
Species Cross-Reactivity	Human;Rat;Mouse;
Recommended dilutions	Western Blot: 1/500 - 1/2000. Immunofluorescence: 1/200 - 1/1000. ELISA: 1/20000. Not yet tested in other applications.
Immunogen	The antiserum was produced against synthesized peptide derived from human OR4N4. AA range:56-105
Specificity	Olfactory receptor 4N4 Polyclonal Antibody detects endogenous levels of Olfactory receptor 4N4 protein.
Formulation	Liquid in PBS containing 50% glycerol, 0.5% BSA and 0.02% sodium azide.
Storage	Store at -20°C. Avoid repeated freeze-thaw cycles.
Protein Name	Olfactory receptor 4N4
Gene Name	OR4N4
Cellular localization	Cell membrane; Multi-pass membrane protein.
Purification	The antibody was affinity-purified from rabbit antiserum by affinity-chromatography using epitope-specific immunogen.
Clonality	Polyclonal
Concentration	1 mg/ml
Observed band	36kD
Human Gene ID	283694
Human Swiss-Prot Number	Q8N0Y3
Alternative Names	OR4N4; Olfactory receptor 4N4; Olfactory receptor OR15-1; Olfactory receptor OR15-5
Background	olfactory receptor family 4 subfamily N member 4(OR4N4) Homo sapiens Olfactory receptors interact with odorant molecules in the nose, to initiate a neuronal response that triggers the





perception of a smell. The olfactory receptor proteins are members of a large family of G-protein-coupled receptors (GPCR) arising from single coding-exon genes. Olfactory receptors share a 7-transmembrane domain structure with many neurotransmitter and hormone receptors and are responsible for the recognition and G protein-mediated transduction of odorant signals. The olfactory receptor gene family is the largest in the genome. The nomenclature assigned to the olfactory receptor genes and proteins for this organism is independent of other organisms. [provided by RefSeq, Jul 2008],



Western blot analysis of lysates from HeLa cells, using OR4N4 Antibody. The lane on the right is blocked with the synthesized peptide.

