



GPR12 rabbit pAb

Cat No.:ES5585

For research use only

Overview

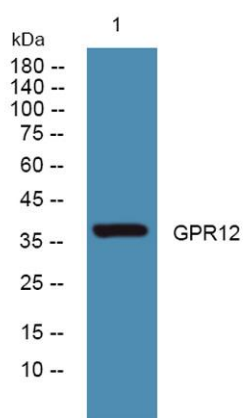
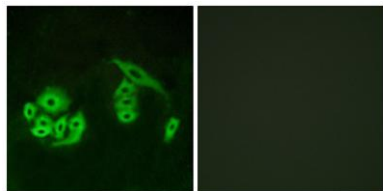
Product Name	GPR12 rabbit pAb
Host species	Rabbit
Applications	WB;IF;ELISA
Species Cross-Reactivity	Human;Rat;Mouse;
Recommended dilutions	Western Blot: 1/500 - 1/2000. Immunofluorescence: 1/200 - 1/1000. ELISA: 1/5000. Not yet tested in other applications.
Immunogen	The antiserum was produced against synthesized peptide derived from human GPR12. AA range:1-50
Specificity	GPR12 Polyclonal Antibody detects endogenous levels of GPR12 protein.
Formulation	Liquid in PBS containing 50% glycerol, 0.5% BSA and 0.02% sodium azide.
Storage	Store at -20°C. Avoid repeated freeze-thaw cycles.
Protein Name	G-protein coupled receptor 12
Gene Name	GPR12
Cellular localization	Cell membrane ; Multi-pass membrane protein .
Purification	The antibody was affinity-purified from rabbit antiserum by affinity-chromatography using epitope-specific immunogen.
Clonality	Polyclonal
Concentration	1 mg/ml
Observed band	37kD
Human Gene ID	2835
Human Swiss-Prot Number	P47775
Alternative Names	GPR12; G-protein coupled receptor 12
Background	function:Orphan receptor.,similarity:Belongs to the G-protein coupled receptor 1 family.,





ELK Biotechnology

Immunofluorescence analysis of A549 cells, using GPR12 Antibody. The picture on the right is blocked with the synthesized peptide.



Western blot analysis of lysates from PC12 cells, primary antibody was diluted at 1:1000, 4° over night



+86-27-59760950

ELKbio@ELKbiotech.com

www.elkbiotech.com

23-2, No.388 Gaoxin 2nd Road, Wuhan East Lake Hi-tech Development Zone, Hubei, P.R.C