



# GPR10 rabbit pAb

Cat No.:ES5583

For research use only

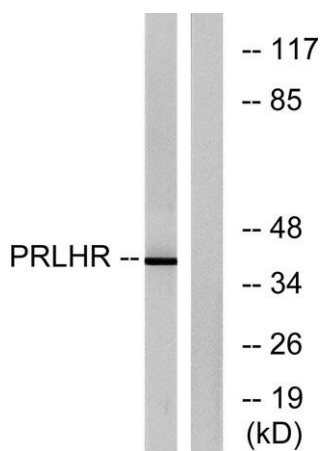
## Overview

<b>Product Name</b>	GPR10 rabbit pAb
<b>Host species</b>	Rabbit
<b>Applications</b>	WB;IF;ELISA
<b>Species Cross-Reactivity</b>	Human;Mouse;Rat
<b>Recommended dilutions</b>	Western Blot: 1/500 - 1/2000. Immunofluorescence: 1/200 - 1/1000. ELISA: 1/20000. Not yet tested in other applications.
<b>Immunogen</b>	The antiserum was produced against synthesized peptide derived from human PRLHR. AA range:184-233
<b>Specificity</b>	GPR10 Polyclonal Antibody detects endogenous levels of GPR10 protein.
<b>Formulation</b>	Liquid in PBS containing 50% glycerol, 0.5% BSA and 0.02% sodium azide.
<b>Storage</b>	Store at -20°C. Avoid repeated freeze-thaw cycles.
<b>Protein Name</b>	Prolactin-releasing peptide receptor
<b>Gene Name</b>	PRLHR
<b>Cellular localization</b>	Cell membrane; Multi-pass membrane protein.
<b>Purification</b>	The antibody was affinity-purified from rabbit antiserum by affinity-chromatography using epitope-specific immunogen.
<b>Clonality</b>	Polyclonal
<b>Concentration</b>	1 mg/ml
<b>Observed band</b>	41kD
<b>Human Gene ID</b>	2834
<b>Human Swiss-Prot Number</b>	P49683
<b>Alternative Names</b>	PRLHR; GPR10; GR3; Prolactin-releasing peptide receptor; PrRP receptor; PrRPR; G-protein coupled receptor 10; hGR3
<b>Background</b>	PRLHR is a 7-transmembrane domain receptor for prolactin-releasing hormone (PRLH; MIM 602663) that is highly expressed in anterior pituitary (Ozawa et al., 2002 [PubMed 11923475]).[supplied by





OMIM, Mar 2008],



Western blot analysis of lysates from Jurkat cells, using PRLHR Antibody. The lane on the right is blocked with the synthesized peptide.

