



# GnRH I rabbit pAb

Cat No.:ES5570

For research use only

## Overview

|                                 |  |
|---------------------------------|--|
| <b>Product Name</b>             | GnRH I rabbit pAb  |
| <b>Host species</b>             | Rabbit   |
| <b>Applications</b>             | IHC;IF;ELISA   |
| <b>Species Cross-Reactivity</b> | Human;Rat;Mouse;   |
| <b>Recommended dilutions</b>    | WB 1:500-2000 ,Immunohistochemistry: 1/100 - 1/300. ELISA: 1/10000. Not yet tested in other applications.  |
| <b>Immunogen</b>                | The antiserum was produced against synthesized peptide derived from human GnRH I. AA range:43-92   |
| <b>Specificity</b>              | GnRH I Polyclonal Antibody detects endogenous levels of GnRH I protein.  |
| <b>Formulation</b>              | Liquid in PBS containing 50% glycerol, 0.5% BSA and 0.02% sodium azide.  |
| <b>Storage</b>                  | Store at -20°C. Avoid repeated freeze-thaw cycles.   |
| <b>Protein Name</b>             | Progonadoliberein-1  |
| <b>Gene Name</b>                | GNRH1  |
| <b>Cellular localization</b>    | Secreted.  |
| <b>Purification</b>             | The antibody was affinity-purified from rabbit antiserum by affinity-chromatography using epitope-specific immunogen.  |
| <b>Clonality</b>                | Polyclonal   |
| <b>Concentration</b>            | 1 mg/ml  |
| <b>Observed band</b>            |  |
| <b>Human Gene ID</b>            | 2796   |
| <b>Human Swiss-Prot Number</b>  | P01148   |
| <b>Alternative Names</b>        | GNRH1; GNRH; GRH; LHRH; Progonadoliberein-1; Progonadoliberein I   |
| <b>Background</b>               | gonadotropin releasing hormone 1(GNRH1) Homo sapiens This gene encodes a preproprotein that is proteolytically processed to generate a peptide that is a member of the gonadotropin-releasing hormone (GnRH) family of peptides. Alternative |

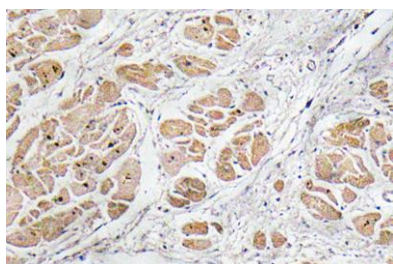




**ELK Biotechnology**

splicing results in multiple transcript variants, at least one of which is secreted and then cleaved to generate gonadoliberein-1 and GnRH-associated peptide 1. Gonadoliberein-1 stimulates the release of luteinizing and follicle stimulating hormones, which are important for reproduction. Mutations in this gene are associated with hypogonadotropic hypogonadism. [provided by RefSeq, Nov 2015],

Immunohistochemistry analysis of GnRH I antibody in paraffin-embedded human heart tissue.



+86-27-59760950

[ELKbio@ELKbiotech.com](mailto:ELKbio@ELKbiotech.com)

[www.elkbiotech.com](http://www.elkbiotech.com)

23-2, No.388 Gaoxin 2nd Road,Wuhan East Lake Hi-tech Development Zone, Hubei , P.R.C