



SPAK (phospho Ser323) rabbit pAb

Cat No.:ES5557

For research use only

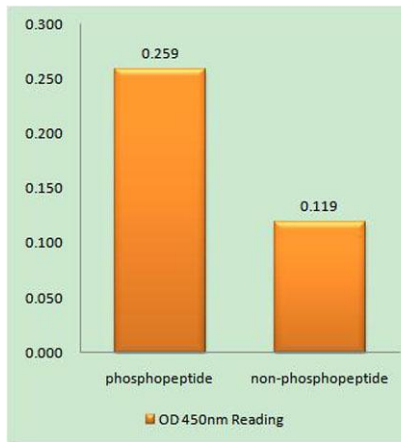
Overview

Product Name	SPAK (phospho Ser323) rabbit pAb
Host species	Rabbit
Applications	IHC;IF;ELISA
Species Cross-Reactivity	Human;Mouse;Rat
Recommended dilutions	Immunohistochemistry: 1/100 - 1/300. ELISA: 1/5000. Not yet tested in other applications.
Immunogen	The antiserum was produced against synthesized peptide derived from human STK39 around the phosphorylation site of Ser325. AA range:291-340
Specificity	Phospho-SPAK (S325) Polyclonal Antibody detects endogenous levels of SPAK protein only when phosphorylated at S325.
Formulation	Liquid in PBS containing 50% glycerol, 0.5% BSA and 0.02% sodium azide.
Storage	Store at -20°C. Avoid repeated freeze-thaw cycles.
Protein Name	STE20/SPS1-related proline-alanine-rich protein kinase
Gene Name	STK39
Cellular localization	Cytoplasm . Nucleus . Nucleus when caspase-cleaved. .
Purification	The antibody was affinity-purified from rabbit antiserum by affinity-chromatography using epitope-specific immunogen.
Clonality	Polyclonal
Concentration	1 mg/ml
Observed band	
Human Gene ID	27347
Human Swiss-Prot Number	Q9UEW8
Alternative Names	STK39; SPAK; STE20/SPS1-related proline-alanine-rich protein kinase; Ste-20-related kinase; DCHT; Serine/threonine-protein kinase 39
Background	This gene encodes a serine/threonine kinase that is thought to function in the cellular stress response





pathway. The kinase is activated in response to hypotonic stress, leading to phosphorylation of several cation-chloride-coupled cotransporters. The catalytically active kinase specifically activates the p38 MAP kinase pathway, and its interaction with p38 decreases upon cellular stress, suggesting that this kinase may serve as an intermediate in the response to cellular stress. [provided by RefSeq, Jul 2008],



Enzyme-Linked Immunosorbent Assay (Phospho-ELISA) for Immunogen Phosphopeptide (Phospho-left) and Non-Phosphopeptide (Phospho-right), using STK39 (Phospho-Ser325) Antibody

Immunohistochemistry analysis of paraffin-embedded human brain, using STK39 (Phospho-Ser325) Antibody. The picture on the right is blocked with the phospho peptide.

