



# Contactin 6 rabbit pAb

Cat No.:ES5552

For research use only

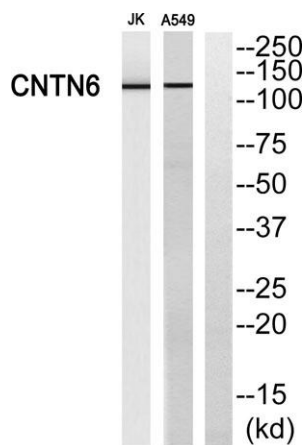
## Overview

<b>Product Name</b>	Contactin 6 rabbit pAb
<b>Host species</b>	Rabbit
<b>Applications</b>	WB;ELISA
<b>Species Cross-Reactivity</b>	Human;Mouse
<b>Recommended dilutions</b>	Western Blot: 1/500 - 1/2000. ELISA: 1/40000. Not yet tested in other applications.
<b>Immunogen</b>	The antiserum was produced against synthesized peptide derived from human CNTN6. AA range:331-380
<b>Specificity</b>	Contactin 6 Polyclonal Antibody detects endogenous levels of Contactin 6 protein.
<b>Formulation</b>	Liquid in PBS containing 50% glycerol, 0.5% BSA and 0.02% sodium azide.
<b>Storage</b>	Store at -20°C. Avoid repeated freeze-thaw cycles.
<b>Protein Name</b>	Contactin-6
<b>Gene Name</b>	CNTN6
<b>Cellular localization</b>	Cell membrane ; Lipid-anchor, GPI-anchor .
<b>Purification</b>	The antibody was affinity-purified from rabbit antiserum by affinity-chromatography using epitope-specific immunogen.
<b>Clonality</b>	Polyclonal
<b>Concentration</b>	1 mg/ml
<b>Observed band</b>	
<b>Human Gene ID</b>	27255
<b>Human Swiss-Prot Number</b>	Q9UQ52
<b>Alternative Names</b>	CNTN6; Contactin-6; Neural recognition molecule NB-3; hNB-3
<b>Background</b>	The protein encoded by this gene is a member of the immunoglobulin superfamily. It is a glycosylphosphatidylinositol (GPI)-anchored neuronal membrane protein that functions as a cell adhesion molecule. It may play a role in the formation of axon connections in the developing

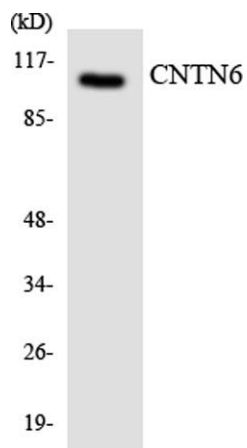




nervous system. Alternative splicing results in multiple transcript variants. [provided by RefSeq, Jan 2014],



Western blot analysis of CNTN6 Antibody. The lane on the right is blocked with the CNTN6 peptide.



Western blot analysis of the lysates from HeLa cells using CNTN6 antibody.

