



Pdcd-4 (phospho Ser457) rabbit pAb

Cat No.:ES5550

For research use only

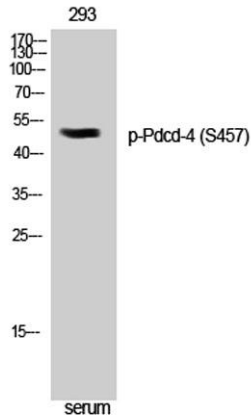
Overview

Product Name	Pdcd-4 (phospho Ser457) rabbit pAb
Host species	Rabbit
Applications	WB;IHC;IF;ELISA
Species Cross-Reactivity	Human;Mouse;Rat
Recommended dilutions	Western Blot: 1/500 - 1/2000. Immunohistochemistry: 1/100 - 1/300. ELISA: 1/10000. Not yet tested in other applications.
Immunogen	The antiserum was produced against synthesized peptide derived from human PDCD4 around the phosphorylation site of Ser457. AA range:420-469
Specificity	Phospho-Pdcd-4 (S457) Polyclonal Antibody detects endogenous levels of Pdcd-4 protein only when phosphorylated at S457.
Formulation	Liquid in PBS containing 50% glycerol, 0.5% BSA and 0.02% sodium azide.
Storage	Store at -20°C. Avoid repeated freeze-thaw cycles.
Protein Name	Programmed cell death protein 4
Gene Name	PDCD4
Cellular localization	Nucleus . Cytoplasm . Shuttles between the nucleus and cytoplasm (By similarity). Predominantly nuclear under normal growth conditions, and when phosphorylated at Ser-457 (PubMed:16357133). .
Purification	The antibody was affinity-purified from rabbit antiserum by affinity-chromatography using epitope-specific immunogen.
Clonality	Polyclonal
Concentration	1 mg/ml
Observed band	51kD
Human Gene ID	27250
Human Swiss-Prot Number	Q53EL6
Alternative Names	PDCD4; H731; Programmed cell death protein 4; Neoplastic transformation inhibitor protein; Nuclear antigen H731-like; Protein 197/15a

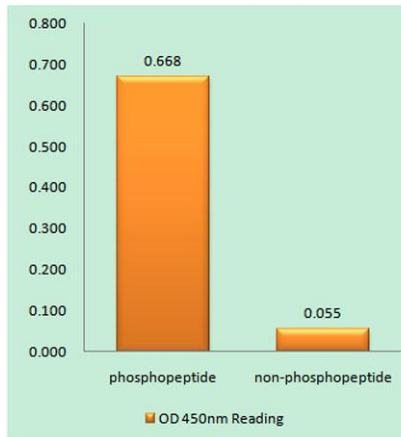


Background

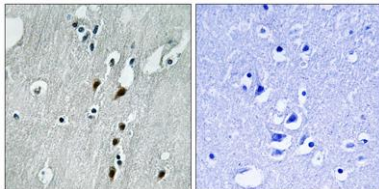
This gene is a tumor suppressor and encodes a protein that binds to the eukaryotic translation initiation factor 4A1 and inhibits its function by preventing RNA binding. Alternative splicing results in multiple transcript variants. [provided by RefSeq, Dec 2010],



Western Blot analysis of 293 cells using Phospho-Pdcd-4 (S457) Polyclonal Antibody



Enzyme-Linked Immunosorbent Assay (Phospho-ELISA) for Immunogen Phosphopeptide (Phospho-left) and Non-Phosphopeptide (Phospho-right), using PDCD4 (Phospho-Ser457) Antibody

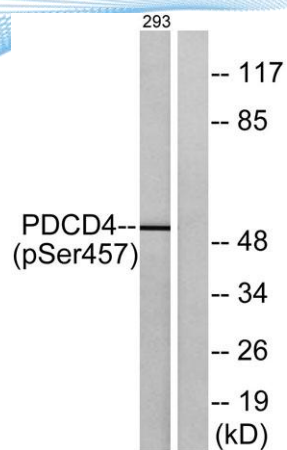


Immunohistochemistry analysis of paraffin-embedded human brain, using PDCD4 (Phospho-Ser457) Antibody. The picture on the right is blocked with the phospho peptide.





ELK Biotechnology



Western blot analysis of lysates from 293 cells treated with serum 20% 15', using PDCD4 (Phospho-Ser457) Antibody. The lane on the right is blocked with the phospho peptide.



+86-27-59760950

ELKbio@ELKbiotech.com

www.elkbiotech.com

23-2, No.388 Gaoxin 2nd Road, Wuhan East Lake Hi-tech Development Zone, Hubei, P.R.C.