



BAM32 (phospho Tyr139) rabbit pAb

Cat No.:ES5538

For research use only

Overview

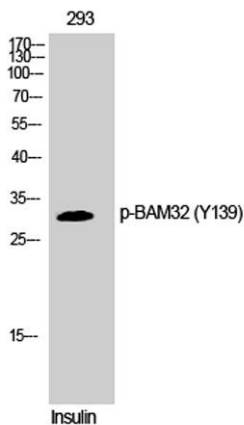
Product Name	BAM32 (phospho Tyr139) rabbit pAb
Host species	Rabbit
Applications	WB;IHC;IF;ELISA
Species Cross-Reactivity	Human;Mouse
Recommended dilutions	Western Blot: 1/500 - 1/2000. Immunohistochemistry: 1/100 - 1/300. Immunofluorescence: 1/200 - 1/1000. ELISA: 1/5000. Not yet tested in other applications.
Immunogen	The antiserum was produced against synthesized peptide derived from human DAPP1 around the phosphorylation site of Tyr139. AA range:105-154
Specificity	Phospho-BAM32 (Y139) Polyclonal Antibody detects endogenous levels of BAM32 protein only when phosphorylated at Y139.
Formulation	Liquid in PBS containing 50% glycerol, 0.5% BSA and 0.02% sodium azide.
Storage	Store at -20°C. Avoid repeated freeze-thaw cycles.
Protein Name	Dual adapter for phosphotyrosine and 3-phosphotyrosine and 3-phosphoinositide
Gene Name	DAPP1
Cellular localization	Cytoplasm . Membrane ; Peripheral membrane protein . Membrane-associated after cell stimulation leading to its translocation.
Purification	The antibody was affinity-purified from rabbit antiserum by affinity-chromatography using epitope-specific immunogen.
Clonality	Polyclonal
Concentration	1 mg/ml
Observed band	32kD
Human Gene ID	27071
Human Swiss-Prot Number	Q9UN19
Alternative Names	DAPP1; BAM32; HSPC066; Dual adapter for phosphotyrosine and 3-phosphotyrosine and



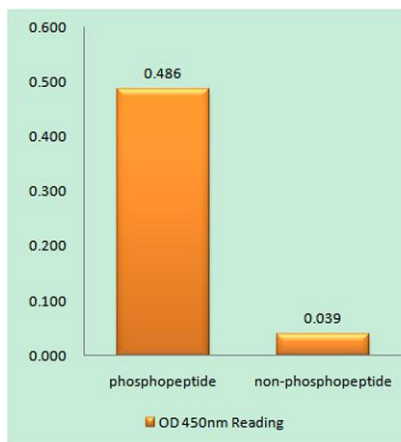


Background

3-phosphoinositide; hDAPP1; B lymphocyte adapter protein Bam32; B-cell adapter molecule of 32 kDa
function: May act as a B-cell-associated adapter that regulates B-cell antigen receptor (BCR)-signaling downstream of PI3K., induction: Upon B-cell activation., PTM: Phosphorylated on tyrosine residues., similarity: Contains 1 PH domain., similarity: Contains 1 SH2 domain., subcellular location: Membrane-associated after cell stimulation leading to its translocation., subunit: Interacts with PtdIns(3,4,5)P3 and PLCG2. In vitro, interacts with PtdIns(3,4)P2., tissue specificity: Highly expressed in placenta and lung, followed by brain, heart, kidney, liver, pancreas and skeletal muscle. Expressed by B-lymphocytes, but not T-lymphocytes or nonhematopoietic cells.,



Western Blot analysis of 293 cells using Phospho-BAM32 (Y139) Polyclonal Antibody

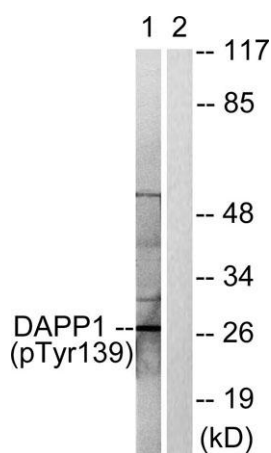
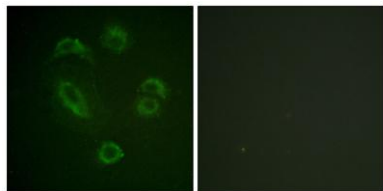


Enzyme-Linked Immunosorbent Assay (Phospho-ELISA) for Immunogen Phosphopeptide (Phospho-left) and Non-Phosphopeptide (Phospho-right), using DAPP1 (Phospho-Tyr139) Antibody





Immunofluorescence analysis of A549 cells, using DAPP1 (Phospho-Tyr139) Antibody. The picture on the right is blocked with the phospho peptide.



Western blot analysis of lysates from 293 cells treated with Insulin 0.01U/ml 2', using DAPP1 (Phospho-Tyr139) Antibody. The lane on the right is blocked with the phospho peptide.

