



# p52 S6 kinase rabbit pAb

Cat No.:ES5514

For research use only

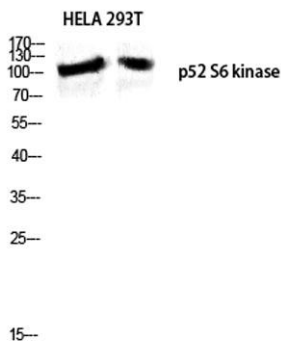
## Overview

<b>Product Name</b>	p52 S6 kinase rabbit pAb
<b>Host species</b>	Rabbit
<b>Applications</b>	WB;IF;ELISA
<b>Species Cross-Reactivity</b>	Human;Mouse
<b>Recommended dilutions</b>	Western Blot: 1/500 - 1/2000. Immunofluorescence: 1/200 - 1/1000. ELISA: 1/20000. Not yet tested in other applications.
<b>Immunogen</b>	The antiserum was produced against synthesized peptide derived from human RPS6KC1. AA range:231-280
<b>Specificity</b>	p52 S6 kinase Polyclonal Antibody detects endogenous levels of p52 S6 kinase protein.
<b>Formulation</b>	Liquid in PBS containing 50% glycerol, 0.5% BSA and 0.02% sodium azide.
<b>Storage</b>	Store at -20°C. Avoid repeated freeze-thaw cycles.
<b>Protein Name</b>	Ribosomal protein S6 kinase delta-1
<b>Gene Name</b>	RPS6KC1
<b>Cellular localization</b>	Cytoplasm . Membrane . Early endosome .
<b>Purification</b>	The antibody was affinity-purified from rabbit antiserum by affinity-chromatography using epitope-specific immunogen.
<b>Clonality</b>	Polyclonal
<b>Concentration</b>	1 mg/ml
<b>Observed band</b>	117kD
<b>Human Gene ID</b>	26750
<b>Human Swiss-Prot Number</b>	Q96S38
<b>Alternative Names</b>	RPS6KC1; RPK118; Ribosomal protein S6 kinase delta-1; S6K-delta-1; 52 kDa ribosomal protein S6 kinase; Ribosomal S6 kinase-like protein with two PSK domains 118 kDa protein; SPHK1-binding protein
<b>Background</b>	catalytic activity:ATP + a protein = ADP + a phosphoprotein.,caution:Instead of Lys-820, Arg-820



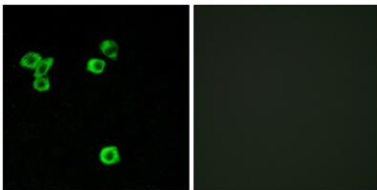


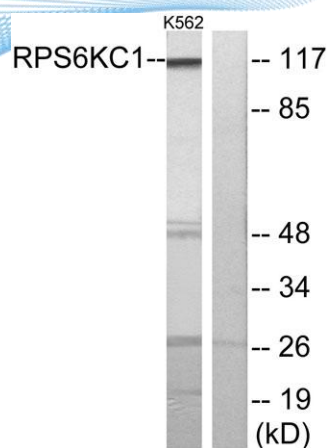
is found at the binding site.,domain:The first protein kinase domain appears to be a pseudokinase domain as it does not contain the classical characteristics, such as the ATP-binding motif, ATP-binding site and active site.,function:May be involved in transmitting sphingosine-1 phosphate (SPP)-mediated signaling into the cell.,similarity:Belongs to the protein kinase superfamily. Ser/Thr protein kinase family. S6 kinase subfamily.,similarity:Contains 1 MIT domain.,similarity:Contains 1 PX (phox homology) domain.,similarity:Contains 2 protein kinase domains.,subcellular location:Also found in some small dot-like or ring-shaped early endosome structures.,subunit:Interacts with SPHK1 and phosphatidylinositol 3-phosphate.,tissue specificity:Highly expressed in testis, skeletal muscle, brain, heart, placenta, kidney and liver and weakly expressed in thymus, small intestine, lung and colon.,



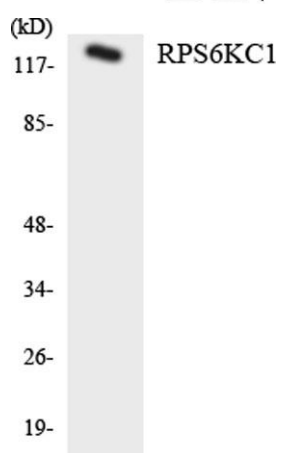
Western blot analysis of HELA 293T lysis using p52 S6 kinase antibody. Antibody was diluted at 1:500

Immunofluorescence analysis of LOVO cells, using RPS6KC1 Antibody. The picture on the right is blocked with the synthesized peptide.





Western blot analysis of lysates from K562 cells, using RPS6KC1 Antibody. The lane on the right is blocked with the synthesized peptide.



Western blot analysis of the lysates from HT-29 cells using RPS6KC1 antibody.

