



# GFAP rabbit pAb

Cat No.:ES5510

For research use only

## Overview

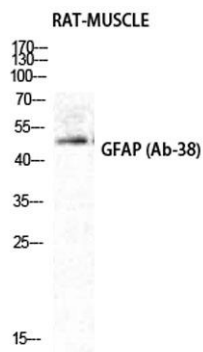
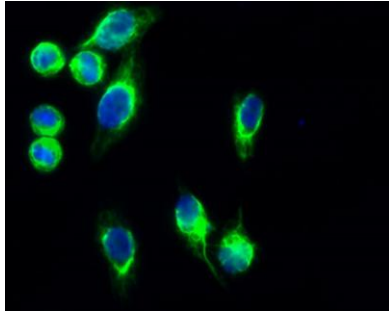
<b>Product Name</b>	GFAP rabbit pAb
<b>Host species</b>	Rabbit
<b>Applications</b>	WB;IHC;IF;ELISA
<b>Species Cross-Reactivity</b>	Human;Rat;Mouse;
<b>Recommended dilutions</b>	Western Blot: 1/500 - 1/2000. Immunohistochemistry: 1/100 - 1/300. Immunofluorescence: 1/200 - 1/1000. ELISA: 1/5000. Not yet tested in other applications.
<b>Immunogen</b>	The antiserum was produced against synthesized peptide derived from human GFAP. AA range:11-60
<b>Specificity</b>	GFAP Polyclonal Antibody detects endogenous levels of GFAP protein.
<b>Formulation</b>	Liquid in PBS containing 50% glycerol, 0.5% BSA and 0.02% sodium azide.
<b>Storage</b>	Store at -20°C. Avoid repeated freeze-thaw cycles.
<b>Protein Name</b>	Glial fibrillary acidic protein
<b>Gene Name</b>	GFAP
<b>Cellular localization</b>	Cytoplasm . Associated with intermediate filaments. .
<b>Purification</b>	The antibody was affinity-purified from rabbit antiserum by affinity-chromatography using epitope-specific immunogen.
<b>Clonality</b>	Polyclonal
<b>Concentration</b>	1 mg/ml
<b>Observed band</b>	50kD
<b>Human Gene ID</b>	2670
<b>Human Swiss-Prot Number</b>	P14136
<b>Alternative Names</b>	GFAP; Glial fibrillary acidic protein; GFAP
<b>Background</b>	This gene encodes one of the major intermediate filament proteins of mature astrocytes. It is used as a marker to distinguish astrocytes from other glial cells during development. Mutations in this gene cause Alexander disease, a rare disorder of



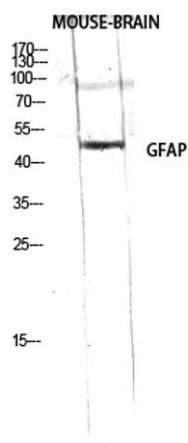


astrocytes in the central nervous system. Alternative splicing results in multiple transcript variants encoding distinct isoforms. [provided by RefSeq, Oct 2008],

Immunofluorescence analysis of Hela cell. 1,GFAP Polyclonal Antibody(green) was diluted at 1:200(4° overnight). 2, Goat Anti Rabbit Alexa Fluor 488 Catalog:RS3211 was diluted at 1:1000(room temperature, 50min). 3 DAPI(blue) 10min.



Western Blot analysis of RAT-MUSCLE cells using GFAP Polyclonal Antibody diluted at 1:2000



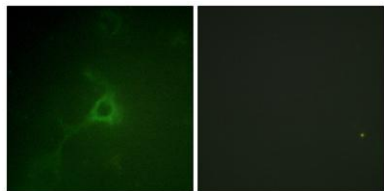
Western Blot analysis of RAW using GFAP Polyclonal Antibody diluted at 1:2000





**ELK Biotechnology**

Immunofluorescence analysis of COS7 cells, using GFAP Antibody. The picture on the right is blocked with the synthesized peptide.



+86-27-59760950

[ELKbio@ELKbiotech.com](mailto:ELKbio@ELKbiotech.com)

[www.elkbiotech.com](http://www.elkbiotech.com)

23-2, No.388 Gaoxin 2nd Road, Wuhan East Lake Hi-tech Development Zone, Hubei, P.R.C