



GCKR rabbit pAb

Cat No.:ES5494

For research use only

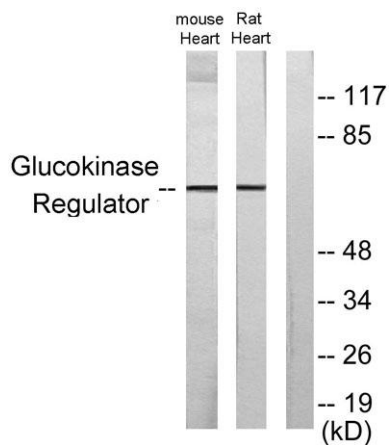
Overview

Product Name	GCKR rabbit pAb
Host species	Rabbit
Applications	WB;ELISA
Species Cross-Reactivity	Human;Mouse;Rat
Recommended dilutions	Western Blot: 1/500 - 1/2000. ELISA: 1/40000. Not yet tested in other applications.
Immunogen	The antiserum was produced against synthesized peptide derived from human Glucokinase Regulator. AA range:211-260
Specificity	GCKR Polyclonal Antibody detects endogenous levels of GCKR protein.
Formulation	Liquid in PBS containing 50% glycerol, 0.5% BSA and 0.02% sodium azide.
Storage	Store at -20°C. Avoid repeated freeze-thaw cycles.
Protein Name	Glucokinase regulatory protein
Gene Name	GCKR
Cellular localization	Cytoplasm . Nucleus . Mitochondrion . Under low glucose concentrations, GCKR associates with GCK and the inactive complex is recruited to the hepatocyte nucleus. .
Purification	The antibody was affinity-purified from rabbit antiserum by affinity-chromatography using epitope-specific immunogen.
Clonality	Polyclonal
Concentration	1 mg/ml
Observed band	68kD
Human Gene ID	2646
Human Swiss-Prot Number	Q14397
Alternative Names	GCKR; Glucokinase regulatory protein; Glucokinase regulator
Background	This gene encodes a protein belonging to the GCKR subfamily of the SIS (Sugar ISomerase) family of proteins. The gene product is a regulatory protein





that inhibits glucokinase in liver and pancreatic islet cells by binding non-covalently to form an inactive complex with the enzyme. This gene is considered a susceptibility gene candidate for a form of maturity-onset diabetes of the young (MODY). [provided by RefSeq, Jul 2008],



Western blot analysis of lysates from mouse heart and rat heart cells, using Glucokinase Regulator Antibody. The lane on the right is blocked with the synthesized peptide.

