



# IL-1R9 rabbit pAb

Cat No.:ES5487

For research use only

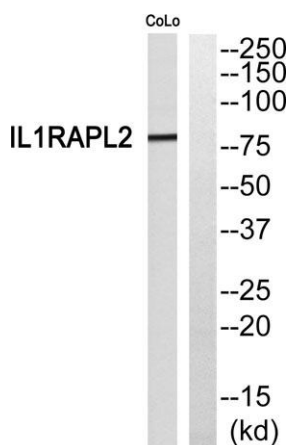
## Overview

<b>Product Name</b>	IL-1R9 rabbit pAb
<b>Host species</b>	Rabbit
<b>Applications</b>	WB;ELISA
<b>Species Cross-Reactivity</b>	Human;Mouse
<b>Recommended dilutions</b>	Western Blot: 1/500 - 1/2000. ELISA: 1/20000. Not yet tested in other applications.
<b>Immunogen</b>	The antiserum was produced against synthesized peptide derived from human IL1RAPL2. AA range:141-190
<b>Specificity</b>	IL-1R9 Polyclonal Antibody detects endogenous levels of IL-1R9 protein.
<b>Formulation</b>	Liquid in PBS containing 50% glycerol, 0.5% BSA and 0.02% sodium azide.
<b>Storage</b>	Store at -20°C. Avoid repeated freeze-thaw cycles.
<b>Protein Name</b>	X-linked interleukin-1 receptor accessory protein-like 2
<b>Gene Name</b>	IL1RAPL2
<b>Cellular localization</b>	Membrane; Single-pass type I membrane protein.
<b>Purification</b>	The antibody was affinity-purified from rabbit antiserum by affinity-chromatography using epitope-specific immunogen.
<b>Clonality</b>	Polyclonal
<b>Concentration</b>	1 mg/ml
<b>Observed band</b>	79kD
<b>Human Gene ID</b>	26280
<b>Human Swiss-Prot Number</b>	Q9NP60
<b>Alternative Names</b>	IL1RAPL2; IL1R9; X-linked interleukin-1 receptor accessory protein-like 2; IL-1 receptor accessory protein-like 2; IL-1-RAPL-2; IL-1RAPL-2; IL1RAPL-2; IL1RAPL-2-related protein; Interleukin-1 receptor 9; IL-1R-9; IL-1R9; Three immunoglobuli
<b>Background</b>	The protein encoded by this gene is a member of the interleukin 1 receptor family. This protein is





similar to the interleukin 1 accessory proteins, and is most closely related to interleukin 1 receptor accessory protein-like 1 (IL1RAPL1). This gene and IL1RAPL1 are located at a region on chromosome X that is associated with X-linked non-syndromic mental retardation. [provided by RefSeq, Jul 2008],



Western blot analysis of IL1RAPL2 Antibody. The lane on the right is blocked with the IL1RAPL2 peptide.

