



# Nephrocystin-4 rabbit pAb

Cat No.:ES5472

For research use only

## Overview

<b>Product Name</b>	Nephrocystin-4 rabbit pAb
<b>Host species</b>	Rabbit
<b>Applications</b>	IHC;IF;ELISA
<b>Species Cross-Reactivity</b>	Human;Rat;Mouse;
<b>Recommended dilutions</b>	Immunohistochemistry: 1/100 - 1/300. ELISA: 1/40000. Not yet tested in other applications.
<b>Immunogen</b>	The antiserum was produced against synthesized peptide derived from human NPHP4. AA range:877-926
<b>Specificity</b>	Nephrocystin-4 Polyclonal Antibody detects endogenous levels of Nephrocystin-4 protein.
<b>Formulation</b>	Liquid in PBS containing 50% glycerol, 0.5% BSA and 0.02% sodium azide.
<b>Storage</b>	Store at -20°C. Avoid repeated freeze-thaw cycles.
<b>Protein Name</b>	Nephrocystin-4
<b>Gene Name</b>	NPHP4
<b>Cellular localization</b>	Cytoplasm, cytoskeleton, cilium basal body . Cytoplasm, cytoskeleton, microtubule organizing center, centrosome . Cell junction, tight junction . Nucleus . In cultured renal cells, it localizes diffusely in the cytoplasm but, as cells approach confluence,
<b>Purification</b>	The antibody was affinity-purified from rabbit antiserum by affinity-chromatography using epitope-specific immunogen.
<b>Clonality</b>	Polyclonal
<b>Concentration</b>	1 mg/ml
<b>Observed band</b>	
<b>Human Gene ID</b>	261734
<b>Human Swiss-Prot Number</b>	O75161
<b>Alternative Names</b>	NPHP4; KIAA0673; Nephrocystin-4; Nephroretinin
<b>Background</b>	This gene encodes a protein involved in renal tubular development and function. This protein interacts with nephrocystin, and belongs to a

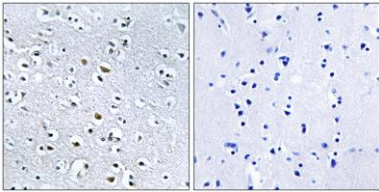




**ELK Biotechnology**

multifunctional complex that is localized to actin- and microtubule-based structures. Mutations in this gene are associated with nephronophthisis type 4, a renal disease, and with Senior-Loken syndrome type 4, a combination of nephronophthisis and retinitis pigmentosa. Alternative splicing results in multiple transcript variants. [provided by RefSeq, Apr 2014],

Immunohistochemistry analysis of paraffin-embedded human brain, using NPHP4 Antibody. The picture on the right is blocked with the synthesized peptide.



+86-27-59760950

[ELKbio@ELKbiotech.com](mailto:ELKbio@ELKbiotech.com)

[www.elkbiotech.com](http://www.elkbiotech.com)

23-2, No.388 Gaoxin 2nd Road,Wuhan East Lake Hi-tech Development Zone, Hubei , P.R.C