



GTPBP5 rabbit pAb

Cat No.:ES5469

For research use only

Overview

Product Name	GTPBP5 rabbit pAb
Host species	Rabbit
Applications	IHC;IF;ELISA
Species Cross-Reactivity	Human;Mouse;Rat
Recommended dilutions	Immunohistochemistry: 1/100 - 1/300. ELISA: 1/20000. Not yet tested in other applications.
Immunogen	The antiserum was produced against synthesized peptide derived from human GTPBP5. AA range:71-120
Specificity	GTPBP5 Polyclonal Antibody detects endogenous levels of GTPBP5 protein.
Formulation	Liquid in PBS containing 50% glycerol, 0.5% BSA and 0.02% sodium azide.
Storage	Store at -20°C. Avoid repeated freeze-thaw cycles.
Protein Name	GTP-binding protein 5
Gene Name	GTPBP5
Cellular localization	Mitochondrion. Mitochondrion inner membrane; Peripheral membrane protein; Matrix side.
Purification	The antibody was affinity-purified from rabbit antiserum by affinity-chromatography using epitope-specific immunogen.
Clonality	Polyclonal
Concentration	1 mg/ml
Observed band	
Human Gene ID	26164
Human Swiss-Prot Number	Q9H4K7
Alternative Names	GTPBP5; OBGH1; GTP-binding protein 5; Protein obg homolog 1; ObgH1
Background	Small G proteins, such as GTPBP5, act as molecular switches that play crucial roles in the regulation of fundamental cellular processes such as protein synthesis, nuclear transport, membrane trafficking, and signal transduction (Hirano et al., 2006

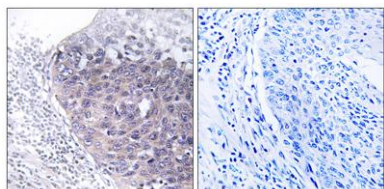




ELK Biotechnology

[PubMed 17054726]).[supplied by OMIM, Mar 2008],

Immunohistochemistry analysis of paraffin-embedded human cervix carcinoma tissue, using GTPBP5 Antibody. The picture on the right is blocked with the synthesized peptide.



+86-27-59760950

ELKbio@ELKbiotech.com

www.elkbiotech.com

23-2, No.388 Gaoxin 2nd Road,Wuhan East Lake Hi-tech Development Zone, Hubei , P.R.C