

LRP10 rabbit pAb

Cat No.:ES5459

For research use only

Overview

Product Name	LRP10 rabbit pAb
Host species	Rabbit
Applications	WB;IHC;IF;ELISA
Species Cross-Reactivity	Human;Mouse;Rat
Recommended dilutions	Western Blot: 1/500 - 1/2000. Immunohistochemistry: 1/100 - 1/300. ELISA: 1/10000. Not yet tested in other applications.
Immunogen	The antiserum was produced against synthesized peptide derived from human LRP10. AA range:204-253
Specificity	LRP10 Polyclonal Antibody detects endogenous levels of LRP10 protein.
Formulation	Liquid in PBS containing 50% glycerol, 0.5% BSA and 0.02% sodium azide.
Storage	Store at -20°C. Avoid repeated freeze-thaw cycles.
Protein Name	Low-density lipoprotein receptor-related protein 10
Gene Name	LRP10
Cellular localization	Membrane ; Single-pass type I membrane protein . Membrane, coated pit .
Purification	The antibody was affinity-purified from rabbit antiserum by affinity-chromatography using epitope-specific immunogen.
Clonality	Polyclonal
Concentration	1 mg/ml
Observed band	76kD
Human Gene ID	26020
Human Swiss-Prot Number	Q7Z4F1
Alternative Names	LRP10; MSTP087; SP220; Low-density lipoprotein receptor-related protein 10; LRP-10
Background	This gene encodes a low density lipoprotein receptor family protein. A similar protein in mouse is thought to play a role in the uptake of apolipoprotein E-containing lipoproteins. [provided

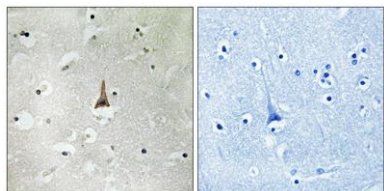




ELK Biotechnology

by RefSeq, Jul 2016],

Immunohistochemistry analysis of paraffin-embedded human brain tissue, using LRP10 Antibody. The picture on the right is blocked with the synthesized peptide.



+86-27-59760950

ELKbio@ELKbiotech.com

www.elkbiotech.com

23-2, No.388 Gaoxin 2nd Road,Wuhan East Lake Hi-tech Development Zone, Hubei , P.R.C