



# T2R43 rabbit pAb

Cat No.:ES5450

For research use only

## Overview

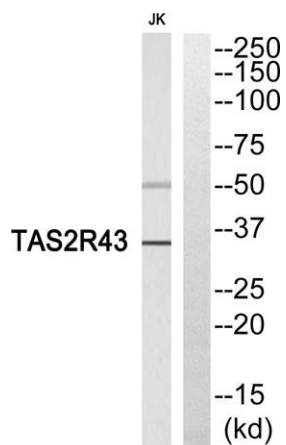
<b>Product Name</b>	T2R43 rabbit pAb
<b>Host species</b>	Rabbit
<b>Applications</b>	WB;ELISA
<b>Species Cross-Reactivity</b>	Human;Rat;Mouse;
<b>Recommended dilutions</b>	Western Blot: 1/500 - 1/2000. ELISA: 1/20000. Not yet tested in other applications.
<b>Immunogen</b>	The antiserum was produced against synthesized peptide derived from human TAS2R43. AA range:124-173
<b>Specificity</b>	T2R43 Polyclonal Antibody detects endogenous levels of T2R43 protein.
<b>Formulation</b>	Liquid in PBS containing 50% glycerol, 0.5% BSA and 0.02% sodium azide.
<b>Storage</b>	Store at -20°C. Avoid repeated freeze-thaw cycles.
<b>Protein Name</b>	Taste receptor type 2 member 43
<b>Gene Name</b>	TAS2R43
<b>Cellular localization</b>	Membrane ; Multi-pass membrane protein . Cell projection, cilium membrane . In airway epithelial cells, localizes to motile cilia.
<b>Purification</b>	The antibody was affinity-purified from rabbit antiserum by affinity-chromatography using epitope-specific immunogen.
<b>Clonality</b>	Polyclonal
<b>Concentration</b>	1 mg/ml
<b>Observed band</b>	35kD
<b>Human Gene ID</b>	259289
<b>Human Swiss-Prot Number</b>	P59537
<b>Alternative Names</b>	TAS2R43; Taste receptor type 2 member 43; T2R43; Taste receptor type 2 member 52; T2R52
<b>Background</b>	TAS2R43 belongs to the large TAS2R receptor family. TAS2Rs are expressed on the surface of taste receptor cells and mediate the perception of bitterness through a G protein-coupled second





messenger pathway (Conte et al., 2002 [PubMed 12584440]). For further information on TAS2Rs, see MIM 604791.[supplied by OMIM, Mar 2009],

Western blot analysis of TAS2R43 Antibody. The lane on the right is blocked with the TAS2R43 peptide.



Western blot analysis of the lysates from COLO205 cells using TAS2R43 antibody.

