



# Phocein rabbit pAb

Cat No.:ES5440

For research use only

## Overview

<b>Product Name</b>	Phocein rabbit pAb
<b>Host species</b>	Rabbit
<b>Applications</b>	WB;IHC;IF;ELISA
<b>Species Cross-Reactivity</b>	Human;Mouse;Rat
<b>Recommended dilutions</b>	Western Blot: 1/500 - 1/2000. Immunohistochemistry: 1/100 - 1/300. Immunofluorescence: 1/200 - 1/1000. ELISA: 1/20000. Not yet tested in other applications.
<b>Immunogen</b>	The antiserum was produced against synthesized peptide derived from human MOBL3. AA range:1-50
<b>Specificity</b>	Phocein Polyclonal Antibody detects endogenous levels of Phocein protein.
<b>Formulation</b>	Liquid in PBS containing 50% glycerol, 0.5% BSA and 0.02% sodium azide.
<b>Storage</b>	Store at -20°C. Avoid repeated freeze-thaw cycles.
<b>Protein Name</b>	MOB-like protein phocein
<b>Gene Name</b>	MOB4
<b>Cellular localization</b>	Cytoplasm, perinuclear region . Membrane ; Peripheral membrane protein . Golgi apparatus, Golgi stack membrane ; Peripheral membrane protein . In a perinuclear punctate pattern. Associated with membranes and the Golgi stacks.
<b>Purification</b>	The antibody was affinity-purified from rabbit antiserum by affinity-chromatography using epitope-specific immunogen.
<b>Clonality</b>	Polyclonal
<b>Concentration</b>	1 mg/ml
<b>Observed band</b>	26kD
<b>Human Gene ID</b>	25843
<b>Human Swiss-Prot Number</b>	Q9Y3A3
<b>Alternative Names</b>	MOB4; MOB3; MOBKL3; PHOCN; PREI3; CGI-95; MOB-like protein phocein; 2C4D; Class II mMOB1; Mob1 homolog 3; Mob3; Mps one binder kinase

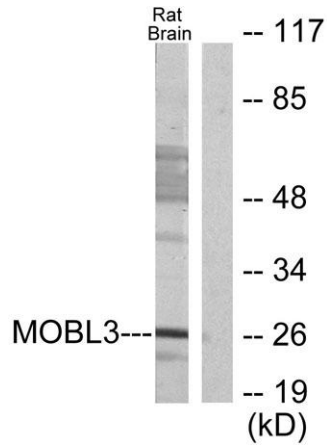




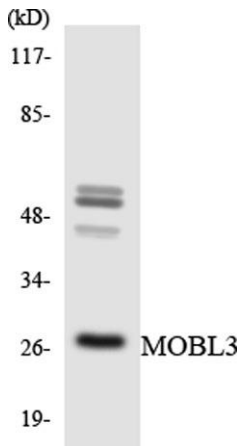
## Background

activator-like 3; Preimplantation protein 3

This gene was identified based on its similarity with the mouse counterpart. Studies of the mouse counterpart suggest that the expression of this gene may be regulated during oocyte maturation and preimplantation following zygotic gene activation. Alternatively spliced transcript variants encoding distinct isoforms have been observed. Naturally occurring read-through transcription occurs between this locus and the neighboring locus HSPE1.[provided by RefSeq, Feb 2011],



Western blot analysis of lysates from rat brain cells, using MOBL3 Antibody. The lane on the right is blocked with the synthesized peptide.

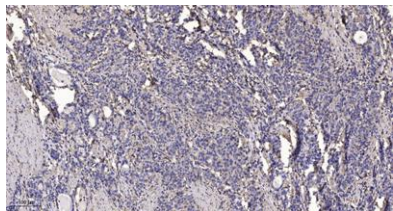


Western blot analysis of the lysates from HT-29 cells using MOBL3 antibody.





**ELK Biotechnology**



Immunohistochemical analysis of paraffin-embedded human Gastric adenocarcinoma. 1, Antibody was diluted at 1:200(4° overnight). 2, Tris-EDTA,pH9.0 was used for antigen retrieval. 3,Secondary antibody was diluted at 1:200(room temperature, 45min).



+86-27-59760950

[ELKbio@ELKbiotech.com](mailto:ELKbio@ELKbiotech.com)

[www.elkbiotech.com](http://www.elkbiotech.com)

23-2, No.388 Gaoxin 2nd Road,Wuhan East Lake Hi-tech Development Zone, Hubei , P.R.C