



ZDHHC20 rabbit pAb

Cat No.:ES5418

For research use only

Overview

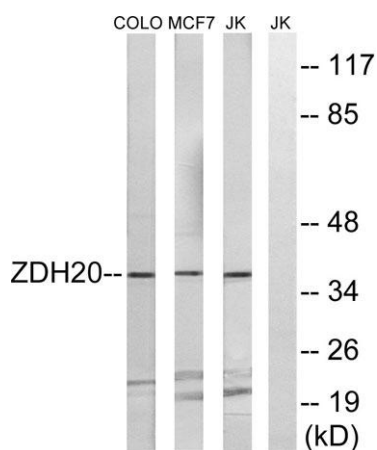
Product Name	ZDHHC20 rabbit pAb
Host species	Rabbit
Applications	WB;ELISA
Species Cross-Reactivity	Human;Mouse;Rat
Recommended dilutions	Western Blot: 1/500 - 1/2000. ELISA: 1/10000. Not yet tested in other applications.
Immunogen	The antiserum was produced against synthesized peptide derived from human ZDHHC20. AA range:72-121
Specificity	ZDHHC20 Polyclonal Antibody detects endogenous levels of ZDHHC20 protein.
Formulation	Liquid in PBS containing 50% glycerol, 0.5% BSA and 0.02% sodium azide.
Storage	Store at -20°C. Avoid repeated freeze-thaw cycles.
Protein Name	Probable palmitoyltransferase ZDHHC20
Gene Name	ZDHHC20
Cellular localization	Golgi apparatus membrane ; Multi-pass membrane protein . Cell membrane ; Multi-pass membrane protein . Cytoplasm, perinuclear region . Endoplasmic reticulum membrane ; Multi-pass membrane protein . Endoplasmic reticulum-Golgi intermediate compartment memb
Purification	The antibody was affinity-purified from rabbit antiserum by affinity-chromatography using epitope-specific immunogen.
Clonality	Polyclonal
Concentration	1 mg/ml
Observed band	37kD
Human Gene ID	253832
Human Swiss-Prot Number	Q5W0Z9
Alternative Names	ZDHHC20; Probable palmitoyltransferase ZDHHC20; Zinc finger DHHC domain-containing protein 20; DHHC-20





Background

catalytic activity: Palmitoyl-CoA + protein-cysteine = S-palmitoyl protein + CoA., domain: The DHHC domain is required for palmitoyltransferase activity., PTM: Phosphorylated upon DNA damage, probably by ATM or ATR., similarity: Belongs to the DHHC palmitoyltransferase family., similarity: Contains 1 DHHC-type zinc finger.,



Western blot analysis of lysates from Jurkat, MCF-7, and COLO cells, using ZDHHC20 Antibody. The lane on the right is blocked with the synthesized peptide.

