



Raftlin rabbit pAb

Cat No.:ES5314

For research use only

Overview

Product Name	Raftlin rabbit pAb
Host species	Rabbit
Applications	WB;IHC
Species Cross-Reactivity	Human;Rat;Mouse;
Recommended dilutions	WB 1:500-2000;IHC-p 1:50-300
Immunogen	The antiserum was produced against synthesized peptide derived from human RFTN1. AA range:432-481
Specificity	Raftlin Polyclonal Antibody detects endogenous levels of Raftlin protein.
Formulation	Liquid in PBS containing 50% glycerol, 0.5% BSA and 0.02% sodium azide.
Storage	Store at -20°C. Avoid repeated freeze-thaw cycles.
Protein Name	Raftlin
Gene Name	RFTN1
Cellular localization	Cell membrane ; Lipid-anchor . Cytoplasm . Membrane raft . Endosome . Early endosome . Translocates from cytoplasm to cell membrane where it colocalizes with poly (I:C) and then moves to endosomes where it colocalizes with TLR3 (PubMed:21266579). Translocates from cytoplasm to cell membrane where it colocalizes with TLR4 and then together with TLR4 moves to endosomes, upon lipopolysaccharide stimulation (PubMed:27022195). .
Purification	The antibody was affinity-purified from rabbit antiserum by affinity-chromatography using epitope-specific immunogen.
Clonality	Polyclonal
Concentration	1 mg/ml
Observed band	65kD
Human Gene ID	23180
Human Swiss-Prot Number	Q14699



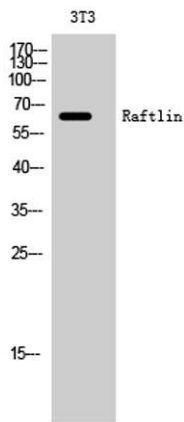


Alternative Names

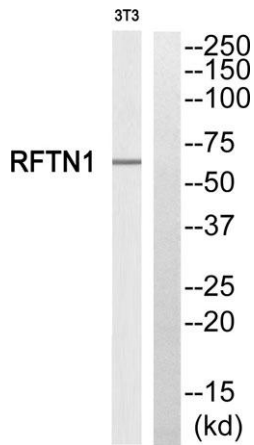
RFTN1; KIAA0084; MIG2; Raftlin; Cell migration-inducing gene 2 protein; Raft-linking protein

Background

function: May play a pivotal role in the formation and/or maintenance of lipid rafts. May regulate B-cell antigen receptor-mediated signaling., similarity: Belongs to the raftlin family., subcellular location: Associates with lipid rafts., tissue specificity: Specifically expressed by B-cells (at protein level).,



Western Blot analysis of 3T3 cells using Raftlin Polyclonal Antibody



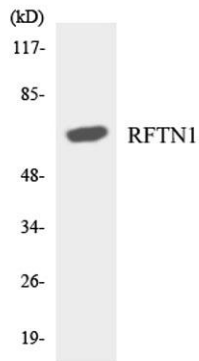
Western blot analysis of RFTN1 Antibody. The lane on the right is blocked with the RFTN1 peptide.



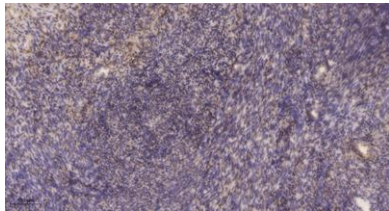


ELK Biotechnology

Western blot analysis of the lysates from RAW264.7 cells using RFTN1 antibody.



Immunohistochemical analysis of paraffin-embedded human uterus. 1, Antibody was diluted at 1:200(4° overnight). 2, Tris-EDTA,pH9.0 was used for antigen retrieval. 3,Secondary antibody was diluted at 1:200(room temperature, 45min).



+86-27-59760950

ELKbio@ELKbiotech.com

www.elkbiotech.com

23-2, No.388 Gaoxin 2nd Road,Wuhan East Lake Hi-tech Development Zone, Hubei , P.R.C