



Melan-A rabbit pAb

Cat No.:ES5311

For research use only

Overview

Product Name	Melan-A rabbit pAb
Host species	Rabbit
Applications	WB;IHC;IF;ELISA
Species Cross-Reactivity	Human;Rat;Mouse;
Recommended dilutions	Western Blot: 1/500 - 1/2000. Immunohistochemistry: 1/100 - 1/300. ELISA: 1/40000. Not yet tested in other applications.
Immunogen	The antiserum was produced against synthesized peptide derived from human MART-1. AA range:41-90
Specificity	Melan-A Polyclonal Antibody detects endogenous levels of Melan-A protein.
Formulation	Liquid in PBS containing 50% glycerol, 0.5% BSA and 0.02% sodium azide.
Storage	Store at -20°C. Avoid repeated freeze-thaw cycles.
Protein Name	Melanoma antigen recognized by T-cells 1
Gene Name	MLANA
Cellular localization	Endoplasmic reticulum membrane; Single-pass type III membrane protein. Golgi apparatus. Golgi apparatus, trans-Golgi network membrane. Melanosome. Also found in small vesicles and tubules dispersed over the entire cytoplasm. A small fraction of the protei
Purification	The antibody was affinity-purified from rabbit antiserum by affinity-chromatography using epitope-specific immunogen.
Clonality	Polyclonal
Concentration	1 mg/ml
Observed band	15kD
Human Gene ID	2315
Human Swiss-Prot Number	Q16655
Alternative Names	MLANA; MART1; Melanoma antigen recognized by T-cells 1; MART-1; Antigen LB39-AA; Antigen

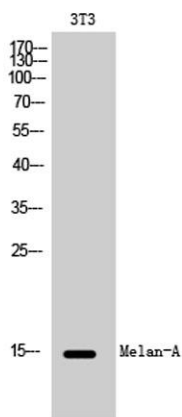




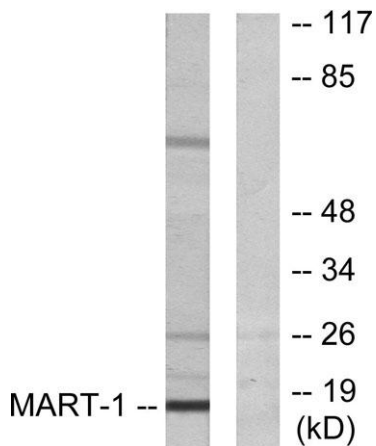
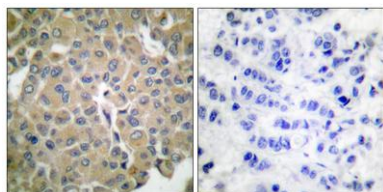
Background

SK29-AA; Protein Melan-A
tissue specificity: Expression is restricted to melanoma and melanocyte cell lines and retina.,

Western Blot analysis of 3T3 cells using Melan-A Polyclonal Antibody



Immunohistochemistry analysis of paraffin-embedded human breast carcinoma tissue, using MART-1 Antibody. The picture on the right is blocked with the synthesized peptide.



Western blot analysis of lysates from NIH/3T3 cells, using MART-1 Antibody. The lane on the right is blocked with the synthesized peptide.

