



FoxO1A (phospho Ser329) rabbit pAb

Cat No.:ES5302

For research use only

Overview

Product Name	FoxO1A (phospho Ser329) rabbit pAb
Host species	Rabbit
Applications	WB;IHC;IF;ELISA
Species Cross-Reactivity	Human;Mouse;Rat
Recommended dilutions	Western Blot: 1/500 - 1/2000. Immunohistochemistry: 1/100 - 1/300. ELISA: 1/5000. Not yet tested in other applications.
Immunogen	The antiserum was produced against synthesized peptide derived from human FOXO1A around the phosphorylation site of Ser329. AA range:295-344
Specificity	Phospho-FoxO1A (S329) Polyclonal Antibody detects endogenous levels of FoxO1A protein only when phosphorylated at S329.
Formulation	Liquid in PBS containing 50% glycerol, 0.5% BSA and 0.02% sodium azide.
Storage	Store at -20°C. Avoid repeated freeze-thaw cycles.
Protein Name	Forkhead box protein O1
Gene Name	FOXO1
Cellular localization	Cytoplasm . Nucleus . Shuttles between the cytoplasm and nucleus. Largely nuclear in unstimulated cells (PubMed:11311120, PubMed:12228231, PubMed:19221179, PubMed:21245099, PubMed:20543840, PubMed:25009184). In osteoblasts, colocalizes with ATF4 and RUNX2
Purification	The antibody was affinity-purified from rabbit antiserum by affinity-chromatography using epitope-specific immunogen.
Clonality	Polyclonal
Concentration	1 mg/ml
Observed band	70kD
Human Gene ID	2308
Human Swiss-Prot Number	Q12778



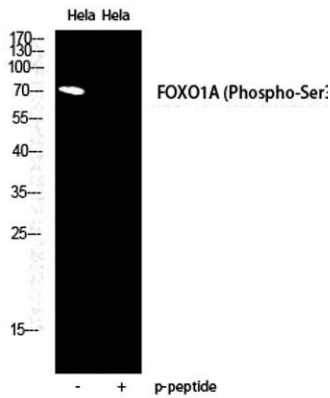


Alternative Names

FOXO1; FKHR; FOXO1A; Forkhead box protein O1; Forkhead box protein O1A; Forkhead in rhabdomyosarcoma

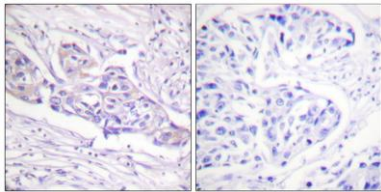
Background

This gene belongs to the forkhead family of transcription factors which are characterized by a distinct forkhead domain. The specific function of this gene has not yet been determined; however, it may play a role in myogenic growth and differentiation. Translocation of this gene with PAX3 has been associated with alveolar rhabdomyosarcoma. [provided by RefSeq, Jul 2008],



Western Blot analysis of HELA cells using Phospho-FoxO1A (S329) Polyclonal Antibody diluted at 1:2000

Immunohistochemistry analysis of paraffin-embedded human breast carcinoma, using FOXO1A (Phospho-Ser329) Antibody. The picture on the right is blocked with the phospho peptide.





ELK Biotechnology

FOXO1A
(pSer329)



-117
-85
-49
-34
(kD)

Western blot analysis of lysates from HeLa cells treated with Serum 20% 15', using FOXO1A (Phospho-Ser329) Antibody. The lane on the right is blocked with the phospho peptide.



+86-27-59760950

ELKbio@ELKbiotech.com

www.elkbiotech.com

23-2, No.388 Gaoxin 2nd Road,Wuhan East Lake Hi-tech Development Zone, Hubei , P.R.C