



MAST3 rabbit pAb

Cat No.:ES5295

For research use only

Overview

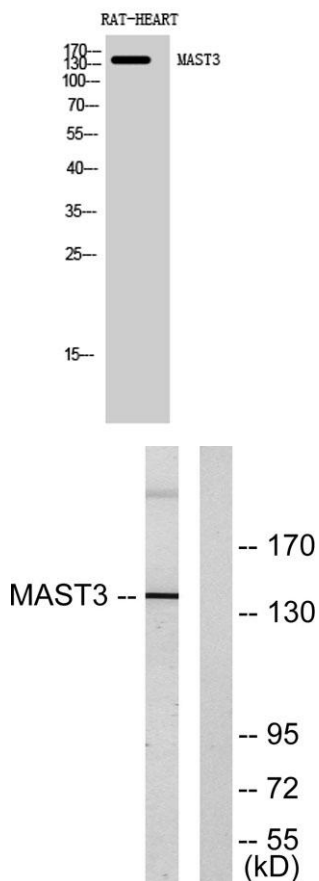
Product Name	MAST3 rabbit pAb
Host species	Rabbit
Applications	WB;ELISA
Species Cross-Reactivity	Human;Mouse
Recommended dilutions	Western Blot: 1/500 - 1/2000. ELISA: 1/10000. Not yet tested in other applications.
Immunogen	The antiserum was produced against synthesized peptide derived from human MAST3. AA range:1031-1080
Specificity	MAST3 Polyclonal Antibody detects endogenous levels of MAST3 protein.
Formulation	Liquid in PBS containing 50% glycerol, 0.5% BSA and 0.02% sodium azide.
Storage	Store at -20°C. Avoid repeated freeze-thaw cycles.
Protein Name	Microtubule-associated serine/threonine-protein kinase 3
Gene Name	MAST3
Cellular localization	intracellular,
Purification	The antibody was affinity-purified from rabbit antiserum by affinity-chromatography using epitope-specific immunogen.
Clonality	Polyclonal
Concentration	1 mg/ml
Observed band	143kD
Human Gene ID	23031
Human Swiss-Prot Number	O60307
Alternative Names	MAST3; KIAA0561; Microtubule-associated serine/threonine-protein kinase 3
Background	catalytic activity:ATP + a protein = ADP + a phosphoprotein.,caution:It is uncertain whether Met-1, Met-171 or Met-172 is the initiator.,cofactor:Magnesium.,similarity:Belongs to the protein kinase superfamily. AGC Ser/Thr protein





kinase family.,similarity:Contains 1 AGC-kinase C-terminal domain.,similarity:Contains 1 PDZ (DHR) domain.,similarity:Contains 1 protein kinase domain.,subunit:Interacts with PTEN.,

Western Blot analysis of RAT-HEART cells using MAST3 Polyclonal Antibody diluted at 1:500



Western blot analysis of lysates from Jurkat cells, using MAST3 Antibody. The lane on the right is blocked with the synthesized peptide.

