



NDR2 rabbit pAb

Cat No.:ES5289

For research use only

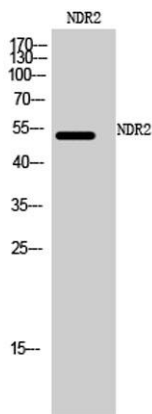
Overview

Product Name	NDR2 rabbit pAb
Host species	Rabbit
Applications	WB;IHC;IF;ELISA
Species Cross-Reactivity	Human;Mouse;Rat
Recommended dilutions	Western Blot: 1/500 - 1/2000.IHC-p:1:50-300 ELISA: 1/20000. Not yet tested in other applications.
Immunogen	Synthesized peptide derived from NDR2 . at AA range: 380-460
Specificity	NDR2 Polyclonal Antibody detects endogenous levels of NDR2 protein.
Formulation	Liquid in PBS containing 50% glycerol, 0.5% BSA and 0.02% sodium azide.
Storage	Store at -20°C. Avoid repeated freeze-thaw cycles.
Protein Name	Serine/threonine-protein kinase 38-like
Gene Name	STK38L
Cellular localization	Cytoplasm. Cytoplasm, cytoskeleton. Membrane. Associated with the actin cytoskeleton. Co-localizes with STK24/MST3 in the membrane.
Purification	The antibody was affinity-purified from rabbit antiserum by affinity-chromatography using epitope-specific immunogen.
Clonality	Polyclonal
Concentration	1 mg/ml
Observed band	54kD
Human Gene ID	23012
Human Swiss-Prot Number	Q9Y2H1
Alternative Names	STK38L; KIAA0965; NDR2; Serine/threonine-protein kinase 38-like; NDR2 protein kinase; Nuclear Dbf2-related kinase 2
Background	catalytic activity:ATP + a protein = ADP + a phosphoprotein.,cofactor:Magnesium.,enzyme regulation:Activated by binding of S100B which releases autoinhibitory N-lobe interactions, enabling





ATP to bind and the autophosphorylation of Ser-282. Thr-442 then undergoes calcium-dependent phosphorylation by an upstream kinase. Interactions between phosphorylated Thr-442 and the N-lobe promote additional structural changes that complete the activation of the kinase. Autoinhibition is also released by the binding of MOB1/MOBKL1A and MOB2/HCCA2 to the N-terminal of STK38L.,function:Involved in the regulation of structural processes in differentiating and mature neuronal cells.,PTM:Phosphorylated upon DNA damage, probably by ATM or ATR.,similarity:Belongs to the protein kinase superfamily. AGC Ser/Thr protein kinase family.,similarity:Contains 1 AGC-kinase C-terminal domain.,similarity:Contains 1 protein kinase domain.,subcellular location:Associated with the actin cytoskeleton.,subunit:Homodimeric S100B binds two molecules of STK38L (By similarity). Interacts with MOB1 and MOB2.,tissue specificity:Ubiquitously expressed with highest levels observed in the thymus.,

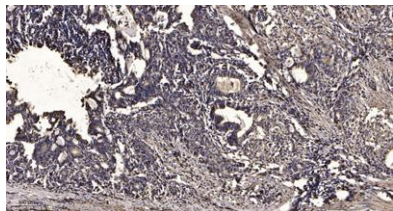


Western Blot analysis of mouse cells using NDR2 Polyclonal Antibody





ELK Biotechnology



Immunohistochemical analysis of paraffin-embedded human tonsil. 1, Antibody was diluted at 1:200(4° overnight). 2, Tris-EDTA,pH9.0 was used for antigen retrieval. 3,Secondary antibody was diluted at 1:200(room temperature, 30min).



+86-27-59760950

ELKbio@ELKbiotech.com

www.elkbiotech.com

23-2, No.388 Gaoxin 2nd Road,Wuhan East Lake Hi-tech Development Zone, Hubei , P.R.C