



MYH15 rabbit pAb

Cat No.:ES5282

For research use only

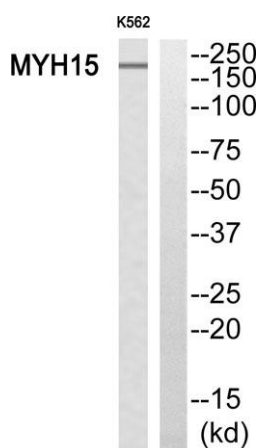
Overview

Product Name	MYH15 rabbit pAb
Host species	Rabbit
Applications	WB;IHC
Species Cross-Reactivity	Human;Rat;Mouse;
Recommended dilutions	WB 1:500-2000;IHC-p 1:50-300
Immunogen	The antiserum was produced against synthesized peptide derived from human MYH15. AA range:624-673
Specificity	MYH15 Polyclonal Antibody detects endogenous levels of MYH15 protein.
Formulation	Liquid in PBS containing 50% glycerol, 0.5% BSA and 0.02% sodium azide.
Storage	Store at -20°C. Avoid repeated freeze-thaw cycles.
Protein Name	Myosin-15
Gene Name	MYH15
Cellular localization	Cytoplasm, myofibril. Thick filaments of the myofibrils.
Purification	The antibody was affinity-purified from rabbit antiserum by affinity-chromatography using epitope-specific immunogen.
Clonality	Polyclonal
Concentration	1 mg/ml
Observed band	225kD
Human Gene ID	22989
Human Swiss-Prot Number	Q9Y2K3
Alternative Names	MYH15; KIAA1000; Myosin-15; Myosin heavy chain 15
Background	domain:The rodlike tail sequence is highly repetitive, showing cycles of a 28-residue repeat pattern composed of 4 heptapeptides, characteristic for alpha-helical coiled coils.,function:Muscle contraction.,similarity:Contains 1 IQ domain.,similarity:Contains 1 myosin head-like

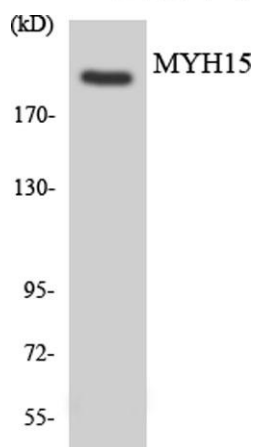




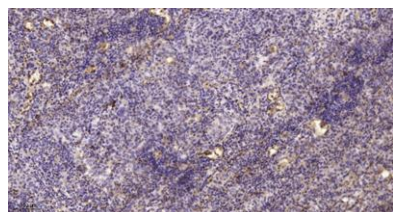
domain.,subcellular location:Thick filaments of the myofibrils.,subunit:Muscle myosin is a hexameric protein that consists of 2 heavy chain subunits (MHC), 2 alkali light chain subunits (MLC) and 2 regulatory light chain subunits (MLC-2).,



Western blot analysis of MYH15 Antibody. The lane on the right is blocked with the MYH15 peptide.



Western blot analysis of the lysates from Jurkat cells using MYH15 antibody.



Immunohistochemical analysis of paraffin-embedded human lung cancer. 1, Antibody was diluted at 1:200(4° overnight). 2, Tris-EDTA,pH9.0 was used for antigen retrieval. 3,Secondary antibody was diluted at 1:200(room temperature, 45min).

