



RHOBTB3 rabbit pAb

Cat No.:ES5258

For research use only

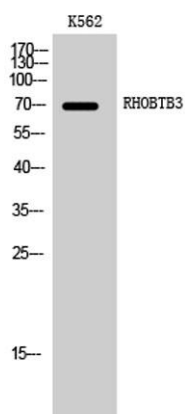
Overview

Product Name	RHOBTB3 rabbit pAb
Host species	Rabbit
Applications	WB;IHC;IF;ELISA
Species Cross-Reactivity	Human;Mouse
Recommended dilutions	Western Blot: 1/500 - 1/2000.IHC-p:1:50-300 ELISA: 1/20000. Not yet tested in other applications.
Immunogen	The antiserum was produced against synthesized peptide derived from human RHOBTB3. AA range:335-384
Specificity	RHOBTB3 Polyclonal Antibody detects endogenous levels of RHOBTB3 protein.
Formulation	Liquid in PBS containing 50% glycerol, 0.5% BSA and 0.02% sodium azide.
Storage	Store at -20°C. Avoid repeated freeze-thaw cycles.
Protein Name	Rho-related BTB domain-containing protein 3
Gene Name	RHOBTB3
Cellular localization	Golgi apparatus .
Purification	The antibody was affinity-purified from rabbit antiserum by affinity-chromatography using epitope-specific immunogen.
Clonality	Polyclonal
Concentration	1 mg/ml
Observed band	70kD
Human Gene ID	22836
Human Swiss-Prot Number	O94955
Alternative Names	RHOBTB3; KIAA0878; Rho-related BTB domain-containing protein 3
Background	RHOBTB3 is a member of the evolutionarily conserved RHOBTB subfamily of Rho GTPases. For background information on RHOBTBs, see RHOBTB1 (MIM 607351).[supplied by OMIM, Apr 2004],

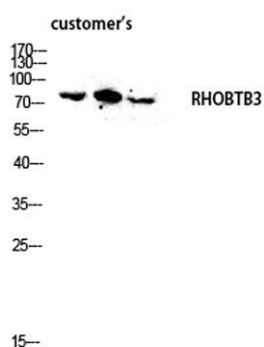




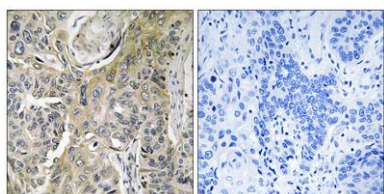
ELK Biotechnology



Western Blot analysis of K562 cells using RHOBTB3
Polyclonal Antibody diluted at 1:2000



Western blot analysis of customer's lysate using RHOBTB3
antibody. Antibody was diluted at 1:2000



Immunohistochemistry analysis of paraffin-embedded
human lung carcinoma tissue, using RHOBTB3 Antibody.
The picture on the right is blocked with the synthesized
peptide.



+86-27-59760950

ELKbio@ELKbiotech.com

www.elkbiotech.com

23-2, No.388 Gaoxin 2nd Road, Wuhan East Lake Hi-tech Development Zone, Hubei, P.R.C.