



RBM16 rabbit pAb

Cat No.:ES5257

For research use only

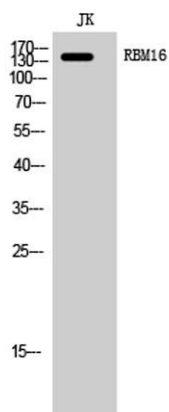
Overview

Product Name	RBM16 rabbit pAb
Host species	Rabbit
Applications	WB;IHC
Species Cross-Reactivity	Human;Mouse;Rat
Recommended dilutions	WB 1:500-2000;IHC-p 1:50-300
Immunogen	Synthesized peptide derived from RBM16 . at AA range: 550-630
Specificity	RBM16 Polyclonal Antibody detects endogenous levels of RBM16 protein.
Formulation	Liquid in PBS containing 50% glycerol, 0.5% BSA and 0.02% sodium azide.
Storage	Store at -20°C. Avoid repeated freeze-thaw cycles.
Protein Name	Protein SCAF8
Gene Name	SCAF8
Cellular localization	Nucleus . Nucleus matrix . Detected in granular nuclear foci which correspond to sites of active transcription. .
Purification	The antibody was affinity-purified from rabbit antiserum by affinity-chromatography using epitope-specific immunogen.
Clonality	Polyclonal
Concentration	1 mg/ml
Observed band	140kD
Human Gene ID	22828
Human Swiss-Prot Number	Q9UPN6
Alternative Names	SCAF8; CCAP7; KIAA1116; RBM16; Protein SCAF8; CDC5L complex-associated protein 7; RNA-binding motif protein 16; SR-related and CTD-associated factor 8
Background	PTM:Phosphorylated upon DNA damage, probably by ATM or ATR.,similarity:Contains 1 CID domain.,similarity:Contains 1 RRM (RNA recognition motif) domain.,

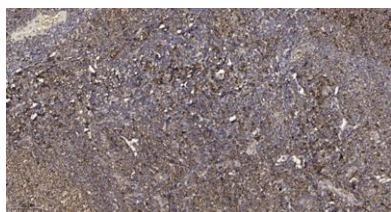




ELK Biotechnology



Western Blot analysis of JK cells using RBM16 Polyclonal Antibody cells nucleus extracted by Minute TM Cytoplasmic and Nuclear Fractionation kit (SC-003, Inventbiotech, MN, USA).



Immunohistochemical analysis of paraffin-embedded human tonsil. 1, Antibody was diluted at 1:200(4° overnight). 2, Tris-EDTA, pH9.0 was used for antigen retrieval. 3, Secondary antibody was diluted at 1:200(room temperature, 45min).



+86-27-59760950

ELKbio@ELKbiotech.com

www.elkbiotech.com

23-2, No.388 Gaoxin 2nd Road, Wuhan East Lake Hi-tech Development Zone, Hubei, P.R.C