



ZNRF2 rabbit pAb

Cat No.:ES5237

For research use only

Overview

Product Name	ZNRF2 rabbit pAb
Host species	Rabbit
Applications	IHC;IF;ELISA
Species Cross-Reactivity	Human;Mouse
Recommended dilutions	Immunohistochemistry: 1/100 - 1/300. Immunofluorescence: 1/200 - 1/1000. ELISA: 1/20000. Not yet tested in other applications.
Immunogen	The antiserum was produced against synthesized peptide derived from human ZNRF2. AA range:161-210
Specificity	ZNRF2 Polyclonal Antibody detects endogenous levels of ZNRF2 protein.
Formulation	Liquid in PBS containing 50% glycerol, 0.5% BSA and 0.02% sodium azide.
Storage	Store at -20°C. Avoid repeated freeze-thaw cycles.
Protein Name	E3 ubiquitin-protein ligase ZNRF2
Gene Name	ZNRF2
Cellular localization	Endosome membrane ; Peripheral membrane protein . Lysosome membrane ; Peripheral membrane protein . Cell junction, synapse, presynaptic cell membrane ; Peripheral membrane protein .
Purification	The antibody was affinity-purified from rabbit antiserum by affinity-chromatography using epitope-specific immunogen.
Clonality	Polyclonal
Concentration	1 mg/ml
Observed band	
Human Gene ID	223082
Human Swiss-Prot Number	Q8NHG8
Alternative Names	ZNRF2; RNF202; E3 ubiquitin-protein ligase ZNRF2; Protein Ells2; RING finger protein 202; Zinc/RING finger protein 2

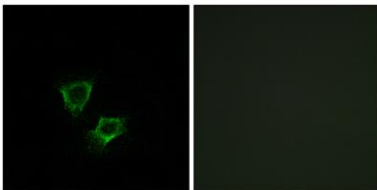




Background

domain: The RING-type zinc finger domain is required for E3 ligase activity., function: May play a role in the establishment and maintenance of neuronal transmission and plasticity via its ubiquitin ligase activity. E3 ubiquitin ligases accept ubiquitin from an E2 ubiquitin-conjugating enzyme in the form of a thioester and then directly transfer the ubiquitin to targeted substrates., pathway: Protein modification; protein ubiquitination., PTM: Phosphorylated upon DNA damage, probably by ATM or ATR., similarity: Contains 1 RING-type zinc finger., subcellular location: Present in presynaptic plasma membranes in neurons., subunit: Interacts with UBE2N., tissue specificity: Highly expressed in the brain, with higher expression during development than in adult. Expressed also in mammary glands, testis, colon and kidney.,

Immunofluorescence analysis of A549 cells, using ZNRF2 Antibody. The picture on the right is blocked with the synthesized peptide.



Immunohistochemical analysis of paraffin-embedded human Squamous cell carcinoma of lung. 1, Antibody was diluted at 1:200(4° overnight). 2, Tris-EDTA, pH9.0 was used for antigen retrieval. 3, Secondary antibody was diluted at 1:200(room temperature, 45min).

