



CD32 (phospho Tyr292) rabbit pAb

Cat No.:ES5227

For research use only

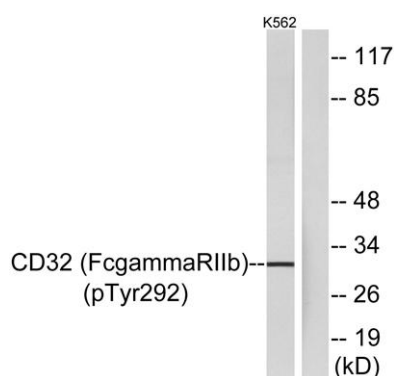
Overview

| | |
|---------------------------------|----------------------------------------------------------------------------------------------------------------------------------------------------------------------------|
| Product Name | CD32 (phospho Tyr292) rabbit pAb |
| Host species | Rabbit |
| Applications | WB;ELISA |
| Species Cross-Reactivity | Human;Mouse;Rat |
| Recommended dilutions | Western Blot: 1/500 - 1/2000. ELISA: 1/10000. Not yet tested in other applications. |
| Immunogen | The antiserum was produced against synthesized peptide derived from human CD32 around the phosphorylation site of Tyr292. AA range:258-307 |
| Specificity | Phospho-CD32 (Y292) Polyclonal Antibody detects endogenous levels of CD32 protein only when phosphorylated at Y292. |
| Formulation | Liquid in PBS containing 50% glycerol, 0.5% BSA and 0.02% sodium azide. |
| Storage | Store at -20°C. Avoid repeated freeze-thaw cycles. |
| Protein Name | Low affinity immunoglobulin gamma Fc region receptor II-b |
| Gene Name | FCGR2B |
| Cellular localization | Cell membrane; Single-pass type I membrane protein. |
| Purification | The antibody was affinity-purified from rabbit antiserum by affinity-chromatography using epitope-specific immunogen. |
| Clonality | Polyclonal |
| Concentration | 1 mg/ml |
| Observed band | 32kD |
| Human Gene ID | 2213 |
| Human Swiss-Prot Number | P31994 |
| Alternative Names | FCGR2B; CD32; FCG2; IGFR2; Low affinity immunoglobulin gamma Fc region receptor II-b; IgG Fc receptor II-b; CDw32; Fc-gamma RII-b; Fc-gamma-RIIb; FcRII-b; CD antigen CD32 |
| Background | The Fc fragment of IgG receptor IIb encoded by |





FCGR2B is a low affinity receptor for the Fc region of immunoglobulin gamma complexes. The encoded protein is involved in the phagocytosis of immune complexes and in the regulation of antibody production by B-cells. Variations in this gene may increase susceptibility to systemic lupus erythematosus (SLE). Several transcript variants encoding different isoforms have been found for this gene.



Western blot analysis of lysates from K562 cells treated with PMA 125ng/ml 30', using CD32 (Phospho-Tyr292) Antibody. The lane on the right is blocked with the phospho peptide.

