



# GPR114 rabbit pAb

Cat No.:ES5225

For research use only

## Overview

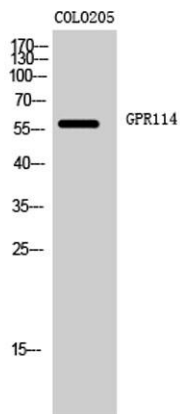
<b>Product Name</b>	GPR114 rabbit pAb
<b>Host species</b>	Rabbit
<b>Applications</b>	WB;IF;ELISA
<b>Species Cross-Reactivity</b>	Human;Rat;Mouse;
<b>Recommended dilutions</b>	Western Blot: 1/500 - 1/2000. Immunofluorescence: 1/200 - 1/1000. ELISA: 1/5000. Not yet tested in other applications.
<b>Immunogen</b>	The antiserum was produced against synthesized peptide derived from human GPR114. AA range:91-140
<b>Specificity</b>	GPR114 Polyclonal Antibody detects endogenous levels of GPR114 protein.
<b>Formulation</b>	Liquid in PBS containing 50% glycerol, 0.5% BSA and 0.02% sodium azide.
<b>Storage</b>	Store at -20°C. Avoid repeated freeze-thaw cycles.
<b>Protein Name</b>	Probable G-protein coupled receptor 114
<b>Gene Name</b>	GPR114
<b>Cellular localization</b>	Cell membrane ; Multi-pass membrane protein .
<b>Purification</b>	The antibody was affinity-purified from rabbit antiserum by affinity-chromatography using epitope-specific immunogen.
<b>Clonality</b>	Polyclonal
<b>Concentration</b>	1 mg/ml
<b>Observed band</b>	59kD
<b>Human Gene ID</b>	221188
<b>Human Swiss-Prot Number</b>	Q8IZF4
<b>Alternative Names</b>	GPR114; PGR27; Probable G-protein coupled receptor 114; G-protein coupled receptor PGR27
<b>Background</b>	This gene encodes a member of the adhesion family of G-protein coupled receptors. Members of this family are characterized by long N-termini and multiple functional domains. They may play a role in the immune system as well as in the central nervous



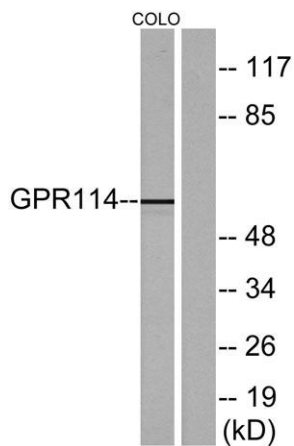


system. Alternative splicing results in multiple transcript variants. [provided by RefSeq, Jan 2016],

Western Blot analysis of COLO205 cells using GPR114 Polyclonal Antibody



Western blot analysis of lysates from COLO205 cells, using GPR114 Antibody. The lane on the right is blocked with the synthesized peptide.



Western blot analysis of the lysates from 293 cells using GPR114 antibody.

