



SAF-A2 rabbit pAb

Cat No.:ES5224

For research use only

Overview

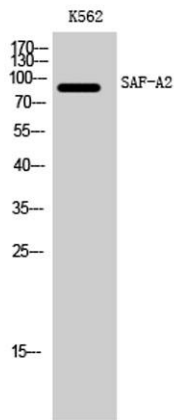
Product Name	SAF-A2 rabbit pAb
Host species	Rabbit
Applications	WB;IHC;IF;ELISA
Species Cross-Reactivity	Human;Mouse
Recommended dilutions	Western Blot: 1/500 - 1/2000. Immunohistochemistry: 1/100 - 1/300. ELISA: 1/40000. Not yet tested in other applications.
Immunogen	The antiserum was produced against synthesized peptide derived from human HNRNPUL2. AA range:601-650
Specificity	SAF-A2 Polyclonal Antibody detects endogenous levels of SAF-A2 protein.
Formulation	Liquid in PBS containing 50% glycerol, 0.5% BSA and 0.02% sodium azide.
Storage	Store at -20°C. Avoid repeated freeze-thaw cycles.
Protein Name	Heterogeneous nuclear ribonucleoprotein U-like protein 2
Gene Name	HNRNPUL2
Cellular localization	Nucleus .
Purification	The antibody was affinity-purified from rabbit antiserum by affinity-chromatography using epitope-specific immunogen.
Clonality	Polyclonal
Concentration	1 mg/ml
Observed band	85kD
Human Gene ID	221092
Human Swiss-Prot Number	Q1KMD3
Alternative Names	HNRNPUL2; HNRPUL2; Heterogeneous nuclear ribonucleoprotein U-like protein 2; Scaffold-attachment factor A2; SAF-A2
Background	similarity:Contains 1 B30.2/SPRY domain.,similarity:Contains 1 SAP domain.,subunit:Binds to MLF1 and retains it in the





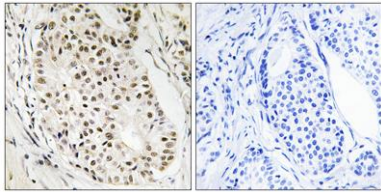
ELK Biotechnology

nucleus.,



Western Blot analysis of K562 cells using SAF-A2 Polyclonal Antibody cells nucleus extracted by Minute™ Cytoplasmic and Nuclear Fractionation kit (SC-003, Inventbiotech, MN, USA).

Immunohistochemistry analysis of paraffin-embedded human breast carcinoma tissue, using HNRNPUL2 Antibody. The picture on the right is blocked with the synthesized peptide.



+86-27-59760950

ELKbio@ELKbiotech.com

www.elkbiotech.com

23-2, No.388 Gaoxin 2nd Road, Wuhan East Lake Hi-tech Development Zone, Hubei, P.R.C