

Fibulin-3 rabbit pAb

Cat No.:ES5223

For research use only

Overview

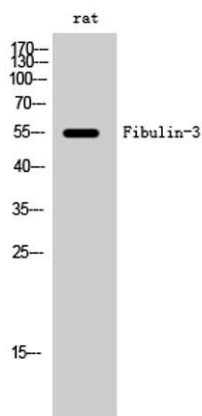
Product Name	Fibulin-3 rabbit pAb
Host species	Rabbit
Applications	WB;IHC;IF;ELISA
Species Cross-Reactivity	Human;Mouse;Rat
Recommended dilutions	Western Blot: 1/500 - 1/2000. Immunohistochemistry: 1/100 - 1/300. ELISA: 1/10000. Not yet tested in other applications.
Immunogen	The antiserum was produced against synthesized peptide derived from human EFEMP1. AA range:111-160
Specificity	Fibulin-3 Polyclonal Antibody detects endogenous levels of Fibulin-3 protein.
Formulation	Liquid in PBS containing 50% glycerol, 0.5% BSA and 0.02% sodium azide.
Storage	Store at -20°C. Avoid repeated freeze-thaw cycles.
Protein Name	EGF-containing fibulin-like extracellular matrix protein 1
Gene Name	EFEMP1
Cellular localization	Secreted, extracellular space . Secreted, extracellular space, extracellular matrix . Localizes to the lamina propria underneath the olfactory epithelium. .
Purification	The antibody was affinity-purified from rabbit antiserum by affinity-chromatography using epitope-specific immunogen.
Clonality	Polyclonal
Concentration	1 mg/ml
Observed band	55kD
Human Gene ID	2202
Human Swiss-Prot Number	Q12805
Alternative Names	EFEMP1; FBLN3; FBNL; EGF-containing fibulin-like extracellular matrix protein 1; Extracellular protein S1-5; Fibrillin-like protein; Fibulin-3; FIBL-3
Background	This gene encodes a member of the fibulin family of



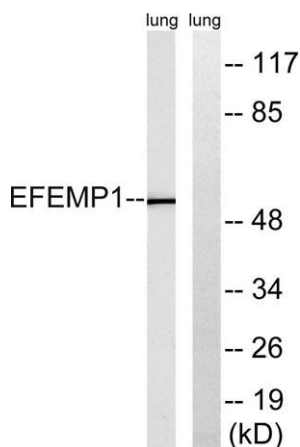


extracellular matrix glycoproteins. Like all members of this family, the encoded protein contains tandemly repeated epidermal growth factor-like repeats followed by a C-terminus fibulin-type domain. This gene is upregulated in malignant gliomas and may play a role in the aggressive nature of these tumors. Mutations in this gene are associated with Doyme honeycomb retinal dystrophy. Alternatively spliced transcript variants that encode the same protein have been described.[provided by RefSeq, Nov 2009],

Western Blot analysis of rat cells using Fibulin-3 Polyclonal Antibody



Western blot analysis of lysates from rat lung, using EFEMP1 Antibody. The lane on the right is blocked with the synthesized peptide.





ELK Biotechnology



Immunohistochemical analysis of paraffin-embedded human tonsil. 1, Antibody was diluted at 1:200(4° overnight). 2, Tris-EDTA,pH9.0 was used for antigen retrieval. 3,Secondary antibody was diluted at 1:200(room temperature, 30min).



+86-27-59760950

ELKbio@ELKbiotech.com

www.elkbiotech.com

23-2, No.388 Gaoxin 2nd Road,Wuhan East Lake Hi-tech Development Zone, Hubei , P.R.C