



Olfactory receptor 7E5P rabbit pAb

Cat No.:ES5209

For research use only

Overview

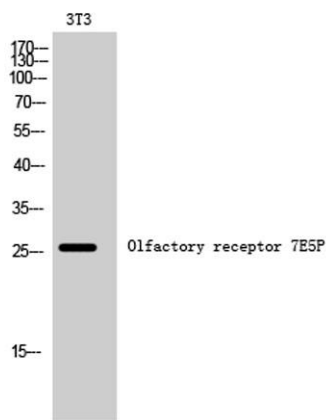
Product Name	Olfactory receptor 7E5P rabbit pAb
Host species	Rabbit
Applications	WB;IF;ELISA
Species Cross-Reactivity	Human;Rat;Mouse;
Recommended dilutions	Western Blot: 1/500 - 1/2000. Immunofluorescence: 1/200 - 1/1000. ELISA: 1/10000. Not yet tested in other applications.
Immunogen	The antiserum was produced against synthesized peptide derived from human OR7E5P. AA range:35-84
Specificity	Olfactory receptor 7E5P Polyclonal Antibody detects endogenous levels of Olfactory receptor 7E5P protein.
Formulation	Liquid in PBS containing 50% glycerol, 0.5% BSA and 0.02% sodium azide.
Storage	Store at -20°C. Avoid repeated freeze-thaw cycles.
Protein Name	Seven transmembrane helix receptor
Gene Name	OR7E5P
Cellular localization	
Purification	The antibody was affinity-purified from rabbit antiserum by affinity-chromatography using epitope-specific immunogen.
Clonality	Polyclonal
Concentration	1 mg/ml
Observed band	26kD
Human Gene ID	219445
Human Swiss-Prot Number	Q96N54
Alternative Names	
Background	Olfactory receptors interact with odorant molecules in the nose, to initiate a neuronal response that triggers the perception of a smell. The olfactory receptor proteins are members of a large family of G-protein-coupled receptors (GPCR) arising from



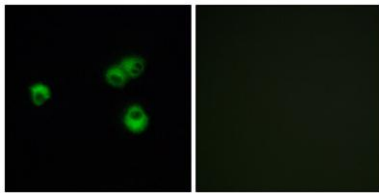


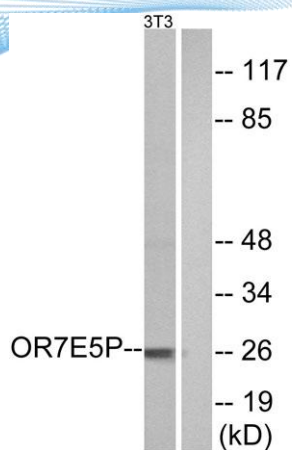
single coding-exon genes. Olfactory receptors share a 7-transmembrane domain structure with many neurotransmitter and hormone receptors and are responsible for the recognition and G protein-mediated transduction of odorant signals. The olfactory receptor gene family is the largest in the genome. The nomenclature assigned to the olfactory receptor genes and proteins for this organism is independent of other organisms. This family member is believed to be a pseudogene.

Western Blot analysis of 3T3 cells using Olfactory receptor 7E5P Polyclonal Antibody

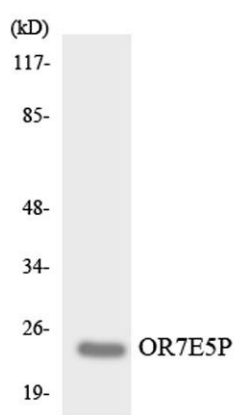


Immunofluorescence analysis of MCF-7 cells, using OR7E5P Antibody. The picture on the right is blocked with the synthesized peptide.





Western blot analysis of lysates from NIH/3T3 cells, using OR7E5P Antibody. The lane on the right is blocked with the synthesized peptide.



Western blot analysis of the lysates from COLO205 cells using OR7E5P antibody.

