



# Cleaved-Factor XII HC (I20) rabbit pAb

Cat No.:ES5190

For research use only

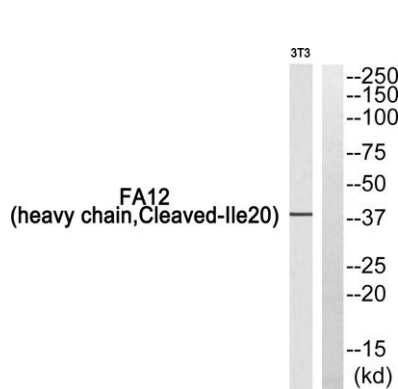
## Overview

<b>Product Name</b>	Cleaved-Factor XII HC (I20) rabbit pAb
<b>Host species</b>	Rabbit
<b>Applications</b>	WB;IHC;IF;ELISA
<b>Species Cross-Reactivity</b>	Human;Rat;Mouse;
<b>Recommended dilutions</b>	Western Blot: 1/500 - 1/2000. Immunohistochemistry: 1/100 - 1/300. ELISA: 1/20000. Not yet tested in other applications.
<b>Immunogen</b>	The antiserum was produced against synthesized peptide derived from human FA12. AA range:1-50
<b>Specificity</b>	Cleaved-Factor XII HC (I20) Polyclonal Antibody detects endogenous levels of fragment of activated Factor XII HC protein resulting from cleavage adjacent to I20.
<b>Formulation</b>	Liquid in PBS containing 50% glycerol, 0.5% BSA and 0.02% sodium azide.
<b>Storage</b>	Store at -20°C. Avoid repeated freeze-thaw cycles.
<b>Protein Name</b>	Coagulation factor XII
<b>Gene Name</b>	F12
<b>Cellular localization</b>	Secreted.
<b>Purification</b>	The antibody was affinity-purified from rabbit antiserum by affinity-chromatography using epitope-specific immunogen.
<b>Clonality</b>	Polyclonal
<b>Concentration</b>	1 mg/ml
<b>Observed band</b>	
<b>Human Gene ID</b>	2161
<b>Human Swiss-Prot Number</b>	P00748
<b>Alternative Names</b>	F12; Coagulation factor XII; Hageman factor; HAF
<b>Background</b>	This gene encodes coagulation factor XII which circulates in blood as a zymogen. This single chain zymogen is converted to a two-chain serine protease with an heavy chain (alpha-factor XIIa) and a light chain. The heavy chain contains two

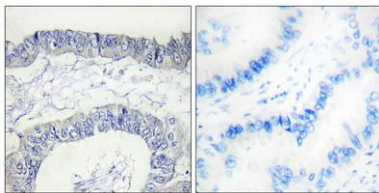




fibronectin-type domains, two epidermal growth factor (EGF)-like domains, a kringle domain and a proline-rich domain, whereas the light chain contains only a catalytic domain. On activation, further cleavages takes place in the heavy chain, resulting in the production of beta-factor XIIa light chain and the alpha-factor XIIa light chain becomes beta-factor XIIa heavy chain. Prekallikrein is cleaved by factor XII to form kallikrein, which then cleaves factor XII first to alpha-factor XIIa and then to beta-factor XIIa. The active factor XIIa participates in the initiation of blood coagulation, fibrinolysis, and the generation of bradykinin and angiotensin. It activat



Western blot analysis of FA12 (heavy chain, Cleaved-Ile20) Antibody. The lane on the right is blocked with the FA12 (heavy chain, Cleaved-Ile20) peptide.



Immunohistochemistry analysis of paraffin-embedded human lung carcinoma, using FA12 (heavy chain, Cleaved-Ile20) Antibody. The lane on the right is blocked with the FA12 (heavy chain, Cleaved-Ile20) peptide.

