



TF (phospho Ser290) rabbit pAb

Cat No.:ES5188

For research use only

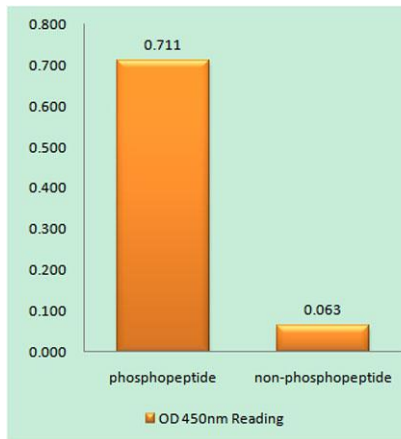
Overview

Product Name	TF (phospho Ser290) rabbit pAb
Host species	Rabbit
Applications	WB;IHC;IF;ELISA
Species Cross-Reactivity	Human;Rat;Mouse;
Recommended dilutions	Western Blot: 1/500 - 1/2000. Immunohistochemistry: 1/100 - 1/300. ELISA: 1/20000. Not yet tested in other applications.
Immunogen	The antiserum was produced against synthesized peptide derived from human Coagulation Factor III around the phosphorylation site of Ser290. AA range:246-295
Specificity	Phospho-TF (S290) Polyclonal Antibody detects endogenous levels of TF protein only when phosphorylated at S290.
Formulation	Liquid in PBS containing 50% glycerol, 0.5% BSA and 0.02% sodium azide.
Storage	Store at -20°C. Avoid repeated freeze-thaw cycles.
Protein Name	Tissue factor
Gene Name	F3
Cellular localization	[Isoform 1]: Membrane ; Single-pass type I membrane protein .; [Isoform 2]: Secreted .
Purification	The antibody was affinity-purified from rabbit antiserum by affinity-chromatography using epitope-specific immunogen.
Clonality	Polyclonal
Concentration	1 mg/ml
Observed band	40kD
Human Gene ID	2152
Human Swiss-Prot Number	P13726
Alternative Names	F3; Tissue factor; TF; Coagulation factor III; Thromboplastin; CD antigen CD142
Background	This gene encodes coagulation factor III which is a cell surface glycoprotein. This factor enables cells to



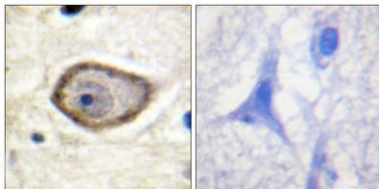


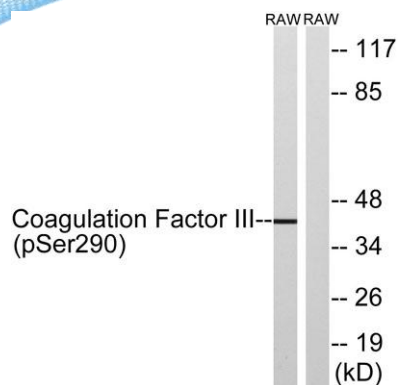
initiate the blood coagulation cascades, and it functions as the high-affinity receptor for the coagulation factor VII. The resulting complex provides a catalytic event that is responsible for initiation of the coagulation protease cascades by specific limited proteolysis. Unlike the other cofactors of these protease cascades, which circulate as nonfunctional precursors, this factor is a potent initiator that is fully functional when expressed on cell surfaces. There are 3 distinct domains of this factor: extracellular, transmembrane, and cytoplasmic. This protein is the only one in the coagulation pathway for which a congenital deficiency has not been described. Alternate splicing results in multiple transcript variants.[provided by RefSeq, May 2010],



Enzyme-Linked Immunosorbent Assay (Phospho-ELISA) for Immunogen Phosphopeptide (Phospho-left) and Non-Phosphopeptide (Phospho-right), using Coagulation Factor III (Phospho-Ser290) Antibody

Immunohistochemistry analysis of paraffin-embedded human brain, using Coagulation Factor III (Phospho-Ser290) Antibody. The picture on the right is blocked with the phospho peptide.





Western blot analysis of lysates from RAW264.7 cells treated with TNF 20ng/ml 30', using Coagulation Factor III (Phospho-Ser290) Antibody. The lane on the right is blocked with the phospho peptide.

