



4.1R (phospho Tyr660) rabbit pAb

Cat No.:ES5122

For research use only

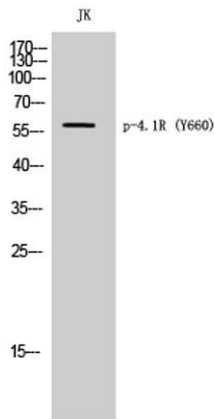
Overview

Product Name	4.1R (phospho Tyr660) rabbit pAb
Host species	Rabbit
Applications	WB;IHC;IF;ELISA
Species Cross-Reactivity	Human;Mouse
Recommended dilutions	Western Blot: 1/500 - 1/2000. Immunohistochemistry: 1/100 - 1/300. ELISA: 1/5000. Not yet tested in other applications.
Immunogen	The antiserum was produced against synthesized peptide derived from human EPB41 around the phosphorylation site of Tyr660/418. AA range:626-675
Specificity	Phospho-4.1R (Y660) Polyclonal Antibody detects endogenous levels of 4.1R protein only when phosphorylated at Y660.
Formulation	Liquid in PBS containing 50% glycerol, 0.5% BSA and 0.02% sodium azide.
Storage	Store at -20°C. Avoid repeated freeze-thaw cycles.
Protein Name	Protein 4.1
Gene Name	EPB41
Cellular localization	Cytoplasm, cytoskeleton . Cytoplasm, cell cortex . Nucleus .
Purification	The antibody was affinity-purified from rabbit antiserum by affinity-chromatography using epitope-specific immunogen.
Clonality	Polyclonal
Concentration	1 mg/ml
Observed band	60kD
Human Gene ID	2035
Human Swiss-Prot Number	P11171
Alternative Names	EPB41; E41P; Protein 4.1; P4.1; 4.1R; Band 4.1; EPB4.1
Background	The protein encoded by this gene, together with spectrin and actin, constitute the red cell membrane

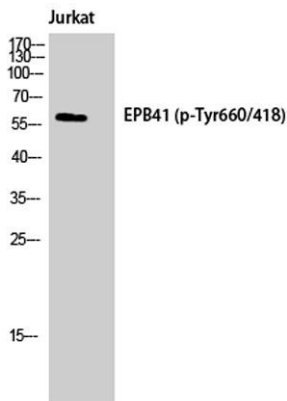




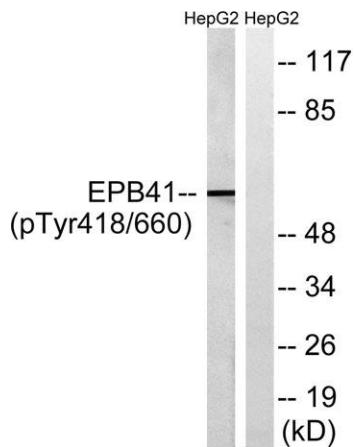
cytoskeletal network. This complex plays a critical role in erythrocyte shape and deformability. Mutations in this gene are associated with type 1 elliptocytosis (EL1). Alternatively spliced transcript variants encoding different isoforms have been described for this gene.[provided by RefSeq, Oct 2009],



Western Blot analysis of JK cells using Phospho-4.1R (Y660) Polyclonal Antibody



Western Blot analysis of Jurkat cells using Phospho-4.1R (Y660) Polyclonal Antibody

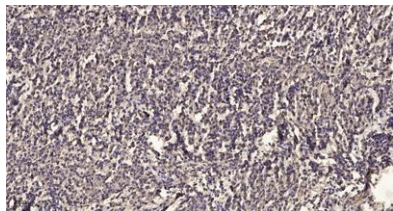


Western blot analysis of lysates from HepG2 cells treated with PMA 125ng/ml 30', using EPB41 (Phospho-Tyr660/418) Antibody. The lane on the right is blocked with the phospho peptide.





ELK Biotechnology



Immunohistochemical analysis of paraffin-embedded human meningioma. 1, Antibody was diluted at 1:200(4° overnight). 2, Tris-EDTA,pH9.0 was used for antigen retrieval. 3,Secondary antibody was diluted at 1:200(room temperature, 45min).



+86-27-59760950

ELKbio@ELKbiotech.com

www.elkbiotech.com

23-2, No.388 Gaoxin 2nd Road,Wuhan East Lake Hi-tech Development Zone, Hubei , P.R.C