



# Emx1 rabbit pAb

Cat No.:ES5114

For research use only

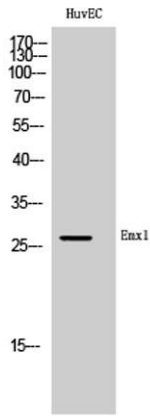
## Overview

<b>Product Name</b>	Emx1 rabbit pAb
<b>Host species</b>	Rabbit
<b>Applications</b>	WB;ELISA
<b>Species Cross-Reactivity</b>	Human;Mouse;Rat
<b>Recommended dilutions</b>	Western Blot: 1/500 - 1/2000. ELISA: 1/40000. Not yet tested in other applications.
<b>Immunogen</b>	The antiserum was produced against synthesized peptide derived from human EMX1. AA range:181-230
<b>Specificity</b>	Emx1 Polyclonal Antibody detects endogenous levels of Emx1 protein.
<b>Formulation</b>	Liquid in PBS containing 50% glycerol, 0.5% BSA and 0.02% sodium azide.
<b>Storage</b>	Store at -20°C. Avoid repeated freeze-thaw cycles.
<b>Protein Name</b>	Homeobox protein EMX1
<b>Gene Name</b>	EMX1
<b>Cellular localization</b>	Nucleus . Cytoplasm . Might be shuttling between the nucleus and the cytoplasm.
<b>Purification</b>	The antibody was affinity-purified from rabbit antiserum by affinity-chromatography using epitope-specific immunogen.
<b>Clonality</b>	Polyclonal
<b>Concentration</b>	1 mg/ml
<b>Observed band</b>	28kD
<b>Human Gene ID</b>	2016
<b>Human Swiss-Prot Number</b>	Q04741
<b>Alternative Names</b>	EMX1; Homeobox protein EMX1; Empty spiracles homolog 1; Empty spiracles-like protein 1
<b>Background</b>	function:Transcription factor, which in cooperation with EMX2, acts to generate the boundary between the roof and archipallium in the developing brain. May function in combinations with OTX1/2 to specify cell fates in the developing central nervous

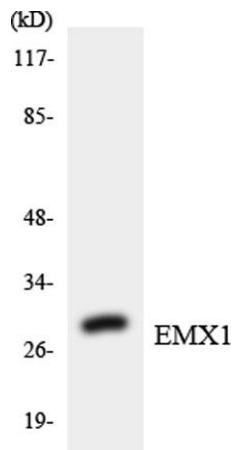




system.,similarity:Belongs to the EMX homeobox family.,similarity:Contains 1 homeobox DNA-binding domain.,tissue specificity:Cerebral cortex.,



Western Blot analysis of HuvEC cells using Emx1 Polyclonal Antibody cells nucleus extracted by Minute TM Cytoplasmic and Nuclear Fractionation kit (SC-003, Inventbiotech, MN, USA).



Western blot analysis of the lysates from Jurkat cells using EMX1 antibody.

