



# Elk-1 (phospho Ser389) rabbit pAb

Cat No.:ES5094

For research use only

## Overview

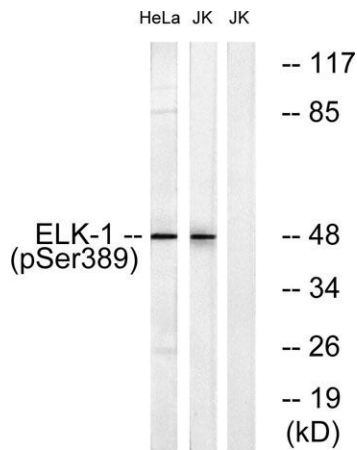
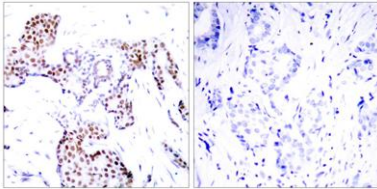
<b>Product Name</b>	Elk-1 (phospho Ser389) rabbit pAb
<b>Host species</b>	Rabbit
<b>Applications</b>	WB;IHC;IF;IP;ELISA
<b>Species Cross-Reactivity</b>	Human;Mouse;Rat
<b>Recommended dilutions</b>	Western Blot: 1/500 - 1/2000. Immunohistochemistry: 1/100 - 1/300. Immunoprecipitation: 2-5 ug/mg lysate. ELISA: 1/10000. Not yet tested in other applications.
<b>Immunogen</b>	The antiserum was produced against synthesized peptide derived from human Elk1 around the phosphorylation site of Ser389. AA range:356-405
<b>Specificity</b>	Phospho-Elk-1 (S389) Polyclonal Antibody detects endogenous levels of Elk-1 protein only when phosphorylated at S389.
<b>Formulation</b>	Liquid in PBS containing 50% glycerol, 0.5% BSA and 0.02% sodium azide.
<b>Storage</b>	Store at -20°C. Avoid repeated freeze-thaw cycles.
<b>Protein Name</b>	ETS domain-containing protein Elk-1
<b>Gene Name</b>	ELK1
<b>Cellular localization</b>	Nucleus.
<b>Purification</b>	The antibody was affinity-purified from rabbit antiserum by affinity-chromatography using epitope-specific immunogen.
<b>Clonality</b>	Polyclonal
<b>Concentration</b>	1 mg/ml
<b>Observed band</b>	48kD
<b>Human Gene ID</b>	2002
<b>Human Swiss-Prot Number</b>	P19419
<b>Alternative Names</b>	ELK1; ETS domain-containing protein Elk-1
<b>Background</b>	This gene is a member of the Ets family of transcription factors and of the ternary complex factor (TCF) subfamily. Proteins of the TCF subfamily form a ternary complex by binding to the the serum





response factor and the serum response element in the promoter of the c-fos proto-oncogene. The protein encoded by this gene is a nuclear target for the ras-raf-MAPK signaling cascade. This gene produces multiple isoforms by using alternative translational start codons and by alternative splicing. Related pseudogenes have been identified on chromosomes 7 and 14. [provided by RefSeq, Mar 2012],

Immunohistochemistry analysis of paraffin-embedded human breast carcinoma, using Elk1 (Phospho-Ser389) Antibody. The picture on the right is blocked with the phospho peptide.



Western blot analysis of lysates from Jurkat cells treated with UV 15' and HeLa cells treated with paclitaxel 1uM 24h, using Elk1 (Phospho-Ser389) Antibody. The lane on the right is blocked with the phospho peptide.

