



# HuB/D rabbit pAb

Cat No.:ES5087

For research use only

## Overview

<b>Product Name</b>	HuB/D rabbit pAb
<b>Host species</b>	Rabbit
<b>Applications</b>	WB;IHC;IF;ELISA
<b>Species Cross-Reactivity</b>	Human;Mouse;Rat
<b>Recommended dilutions</b>	Western Blot: 1/500 - 1/2000. Immunohistochemistry: 1/100 - 1/300. Immunofluorescence: 1/200 - 1/1000. ELISA: 1/40000. Not yet tested in other applications.
<b>Immunogen</b>	The antiserum was produced against synthesized peptide derived from human ELAV2/4. AA range:61-110
<b>Specificity</b>	HuB/D Polyclonal Antibody detects endogenous levels of HuB/D protein.
<b>Formulation</b>	Liquid in PBS containing 50% glycerol, 0.5% BSA and 0.02% sodium azide.
<b>Storage</b>	Store at -20°C. Avoid repeated freeze-thaw cycles.
<b>Protein Name</b>	ELAV-like protein 2/ELAV-like protein 4
<b>Gene Name</b>	ELAVL2/ELAVL4
<b>Cellular localization</b>	nucleoplasm,
<b>Purification</b>	The antibody was affinity-purified from rabbit antiserum by affinity-chromatography using epitope-specific immunogen.
<b>Clonality</b>	Polyclonal
<b>Concentration</b>	1 mg/ml
<b>Observed band</b>	40kD
<b>Human Gene ID</b>	1993/1996
<b>Human Swiss-Prot Number</b>	Q12926/P26378
<b>Alternative Names</b>	ELAVL2; HUB; ELAV-like protein 2; ELAV-like neuronal protein 1; Hu-antigen B; HuB; Nervous system-specific RNA-binding protein Hel-N1; ELAVL4; HUD; PNEM; ELAV-like protein 4; Hu-antigen D; HuD; Paraneoplastic encephalomyelitis antigen HuD

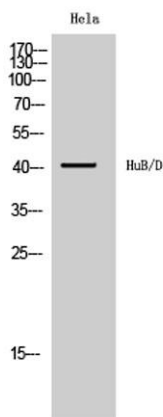




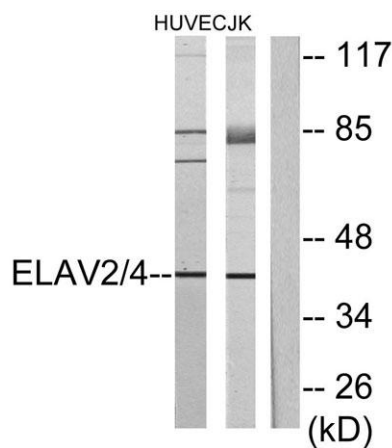
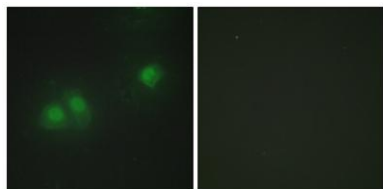
## Background

ELAV like RNA binding protein 2(ELAVL2) Homo sapiens The protein encoded by this gene is a neural-specific RNA-binding protein that is known to bind to several 3' UTRs, including its own and also that of FOS and ID. The encoded protein may recognize a GAAA motif in the RNA. Three transcript variants encoding two different isoforms have been found for this gene. [provided by RefSeq, Jan 2010],

Western Blot analysis of HeLa cells using HuB/D Polyclonal Antibody diluted at 1:1000



Immunofluorescence analysis of HepG2 cells, using ELAV2/4 Antibody. The picture on the right is blocked with the synthesized peptide.

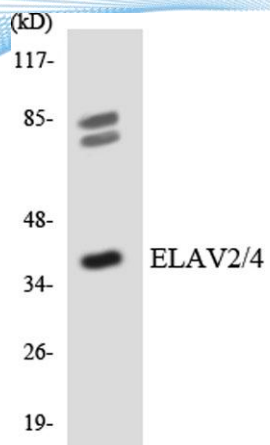


Western blot analysis of lysates from Jurkat and HUVEC cells, using ELAV2/4 Antibody. The lane on the right is blocked with the synthesized peptide.





**ELK Biotechnology**



Western blot analysis of the lysates from 293 cells using ELAV2/4 antibody.



+86-27-59760950

[ELKbio@ELKbiotech.com](mailto:ELKbio@ELKbiotech.com)

[www.elkbiotech.com](http://www.elkbiotech.com)

23-2, No.388 Gaoxin 2nd Road, Wuhan East Lake Hi-tech Development Zone, Hubei, P.R.C