



# DOCK 180 rabbit pAb

Cat No.:ES5015

For research use only

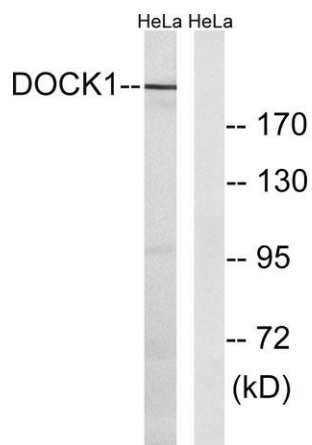
## Overview

<b>Product Name</b>	DOCK 180 rabbit pAb
<b>Host species</b>	Rabbit
<b>Applications</b>	WB;ELISA
<b>Species Cross-Reactivity</b>	Human;Mouse
<b>Recommended dilutions</b>	Western Blot: 1/500 - 1/2000. ELISA: 1/40000. Not yet tested in other applications.
<b>Immunogen</b>	The antiserum was produced against synthesized peptide derived from human DOCK1. AA range:1661-1710
<b>Specificity</b>	DOCK 180 Polyclonal Antibody detects endogenous levels of DOCK 180 protein.
<b>Formulation</b>	Liquid in PBS containing 50% glycerol, 0.5% BSA and 0.02% sodium azide.
<b>Storage</b>	Store at -20°C. Avoid repeated freeze-thaw cycles.
<b>Protein Name</b>	Dedicator of cytokinesis protein 1
<b>Gene Name</b>	DOCK1
<b>Cellular localization</b>	Cytoplasm . Membrane . Recruited to membranes via its interaction with phosphatidylinositol 3,4,5-trisphosphate. .
<b>Purification</b>	The antibody was affinity-purified from rabbit antiserum by affinity-chromatography using epitope-specific immunogen.
<b>Clonality</b>	Polyclonal
<b>Concentration</b>	1 mg/ml
<b>Observed band</b>	215kD
<b>Human Gene ID</b>	1793
<b>Human Swiss-Prot Number</b>	Q14185
<b>Alternative Names</b>	DOCK1; Dedicator of cytokinesis protein 1; 180 kDa protein downstream of CRK; DOCK180
<b>Background</b>	This gene encodes a member of the dedicator of cytokinesis protein family. Dedicator of cytokinesis proteins act as guanine nucleotide exchange factors for small Rho family G proteins. The encoded





protein regulates the small GTPase Rac, thereby influencing several biological processes, including phagocytosis and cell migration. Overexpression of this gene has also been associated with certain cancers. Alternative splicing results in multiple transcript variants. [provided by RefSeq, Mar 2014],



Western blot analysis of lysates from HeLa cells, using DOCK1 Antibody. The lane on the right is blocked with the synthesized peptide.

