

# RAGE rabbit pAb

Cat No.:ES5013

For research use only

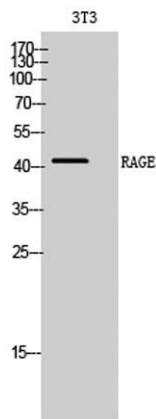
## Overview

Product Name	RAGE rabbit pAb
Host species	Rabbit
Applications	WB;IHC;IF;ELISA
Species Cross-Reactivity	Human;Rat;Mouse;
Recommended dilutions	Western Blot: 1/500 - 1/2000. Immunohistochemistry: 1/100 - 1/300. ELISA: 1/20000. Not yet tested in other applications.
Immunogen	The antiserum was produced against synthesized peptide derived from human RAGE. AA range:133-182
Specificity	RAGE Polyclonal Antibody detects endogenous levels of RAGE protein.
Formulation	Liquid in PBS containing 50% glycerol, 0.5% BSA and 0.02% sodium azide.
Storage	Store at -20°C. Avoid repeated freeze-thaw cycles.
Protein Name	Advanced glycosylation end product-specific receptor
Gene Name	AGER
Cellular localization	[Isoform 1]: Cell membrane; Single-pass type I membrane protein.; [Isoform 2]: Secreted.; [Isoform 10]: Cell membrane ; Single-pass type I membrane protein .
Purification	The antibody was affinity-purified from rabbit antiserum by affinity-chromatography using epitope-specific immunogen.
Clonality	Polyclonal
Concentration	1 mg/ml
Observed band	37kD
Human Gene ID	177
Human Swiss-Prot Number	Q15109
Alternative Names	AGER; RAGE; Advanced glycosylation end product-specific receptor; Receptor for advanced glycosylation end products

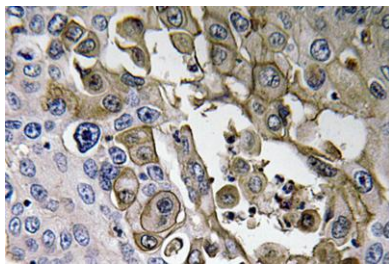


## Background

The advanced glycosylation end product (AGE) receptor encoded by this gene is a member of the immunoglobulin superfamily of cell surface receptors. It is a multiligand receptor, and besides AGE, interacts with other molecules implicated in homeostasis, development, and inflammation, and certain diseases, such as diabetes and Alzheimer's disease. Many alternatively spliced transcript variants encoding different isoforms, as well as non-protein-coding variants, have been described for this gene (PMID:18089847). [provided by RefSeq, May 2011],

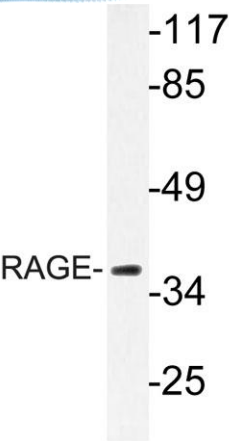


Western Blot analysis of 3T3 cells using RAGE Polyclonal Antibody diluted at 1:1000



Immunohistochemistry analysis of RAGE antibody in paraffin-embedded human lung carcinoma tissue.





Western blot analysis of lysate from LOVO cells, using RAGE antibody.

