

PSD-93 rabbit pAb

Cat No.:ES5007

For research use only

Overview

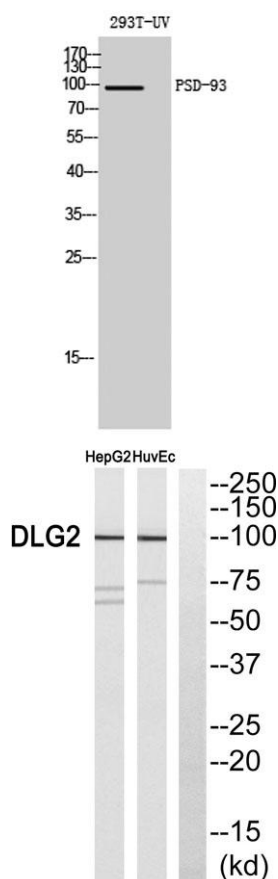
Product Name	PSD-93 rabbit pAb
Host species	Rabbit
Applications	WB;IHC;IF;ELISA
Species Cross-Reactivity	Human;Rat;Mouse;
Recommended dilutions	Western Blot: 1/500 - 1/2000. Immunohistochemistry: 1/100 - 1/300. ELISA: 1/40000. Not yet tested in other applications.
Immunogen	The antiserum was produced against synthesized peptide derived from human DLG2. AA range:601-650
Specificity	PSD-93 Polyclonal Antibody detects endogenous levels of PSD-93 protein.
Formulation	Liquid in PBS containing 50% glycerol, 0.5% BSA and 0.02% sodium azide.
Storage	Store at -20°C. Avoid repeated freeze-thaw cycles.
Protein Name	Disks large homolog 2
Gene Name	DLG2
Cellular localization	Cell membrane ; Lipid-anchor . Cell junction, synapse, postsynaptic density . Cell junction, synapse . Membrane . Cell projection, axon . Perikaryon . Concentrated in soma and postsynaptic density of a subset of neurons. .
Purification	The antibody was affinity-purified from rabbit antiserum by affinity-chromatography using epitope-specific immunogen.
Clonality	Polyclonal
Concentration	1 mg/ml
Observed band	97kD
Human Gene ID	1740
Human Swiss-Prot Number	Q15700
Alternative Names	DLG2; Disks large homolog 2; Channel-associated protein of synapse-110; Chapsyn-110; Postsynaptic density protein PSD-93





Background

This gene encodes a member of the membrane-associated guanylate kinase (MAGUK) family. The encoded protein forms a heterodimer with a related family member that may interact at postsynaptic sites to form a multimeric scaffold for the clustering of receptors, ion channels, and associated signaling proteins. Multiple transcript variants encoding different isoforms have been found for this gene. Additional transcript variants have been described, but their full-length nature is not known. [provided by RefSeq, Dec 2008],



Western Blot analysis of 293T-UV cells using PSD-93
Polyclonal Antibody diluted at 1:1000

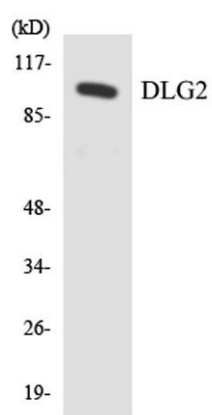
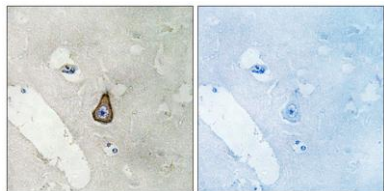
Western blot analysis of DLG2 Antibody. The lane on the
right is blocked with the DLG2 peptide.





ELK Biotechnology

Immunohistochemistry analysis of paraffin-embedded human brain, using DLG2 Antibody. The lane on the right is blocked with the DLG2 peptide.



Western blot analysis of the lysates from HeLa cells using DLG2 antibody.



+86-27-59760950

ELKbio@ELKbiotech.com

www.elkbiotech.com

23-2, No.388 Gaoxin 2nd Road, Wuhan East Lake Hi-tech Development Zone, Hubei, P.R.C.